

TDA

Transmission motor

Double inlet series

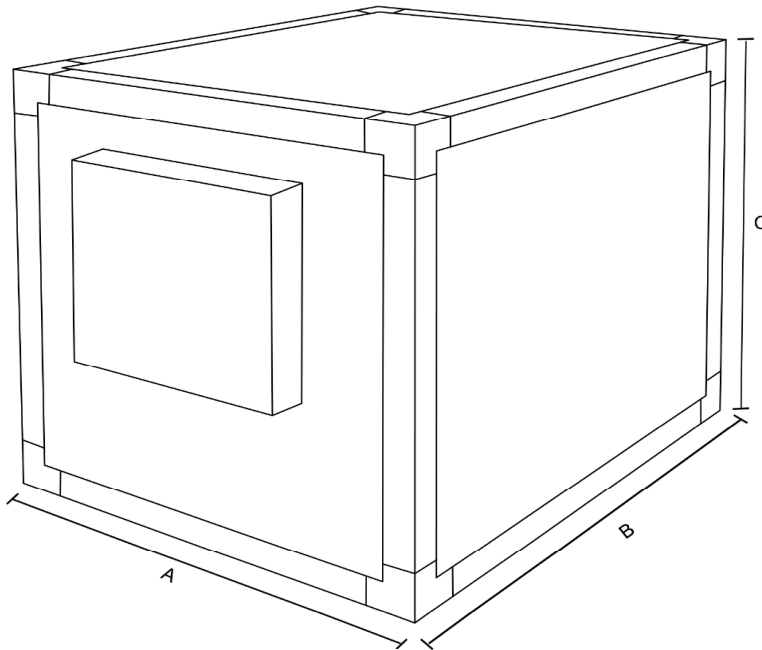
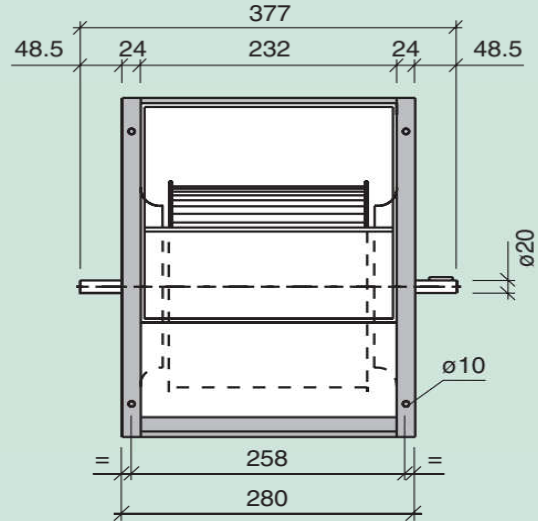
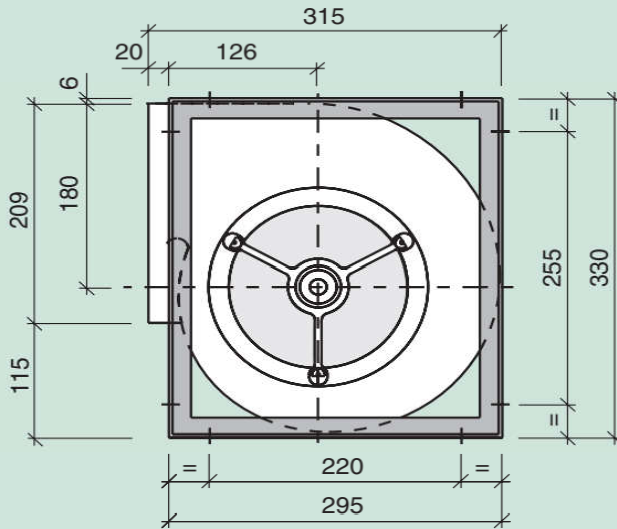
Forward-curved blade centrifugal fans





TDA 7/7

Serie R

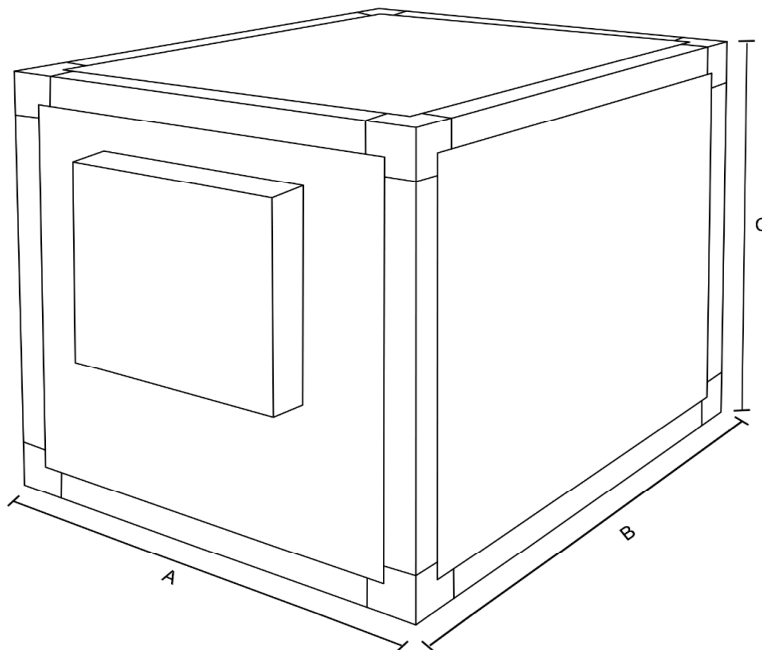
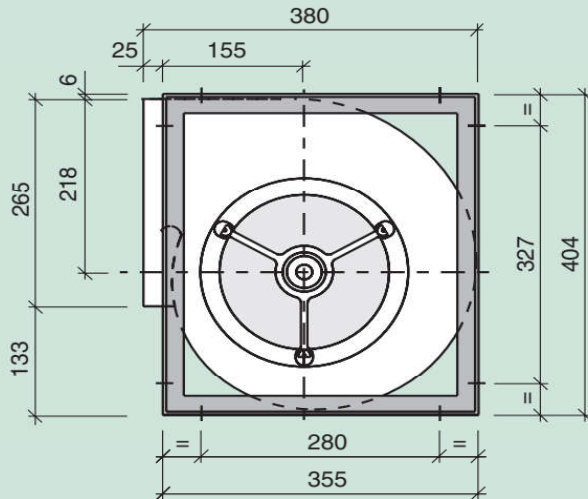


Fan	A	B	C
TDA 7/7	500	650	450



TDA 9/9

Serie R

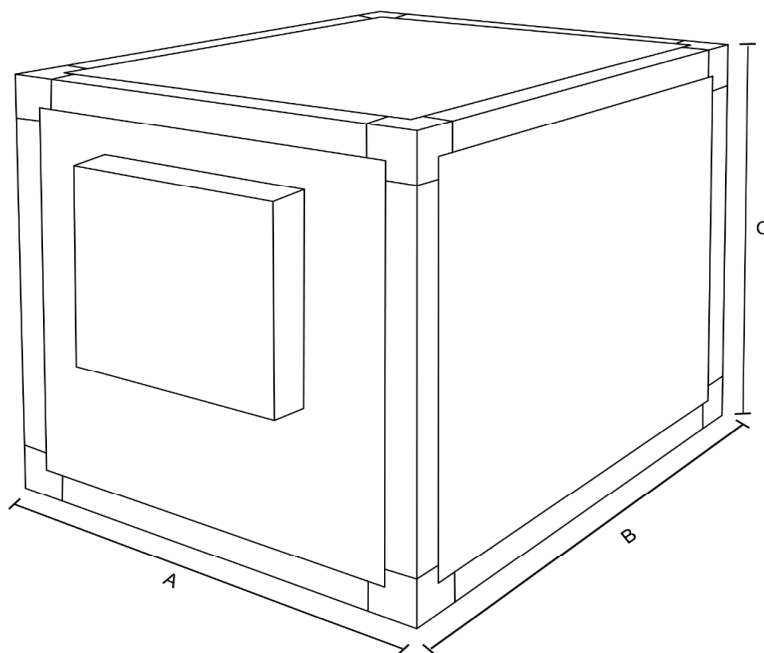
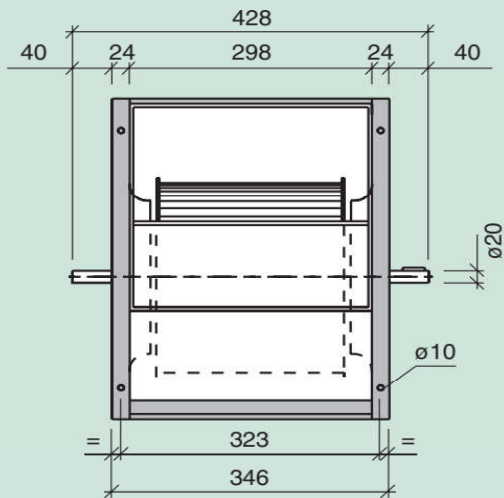
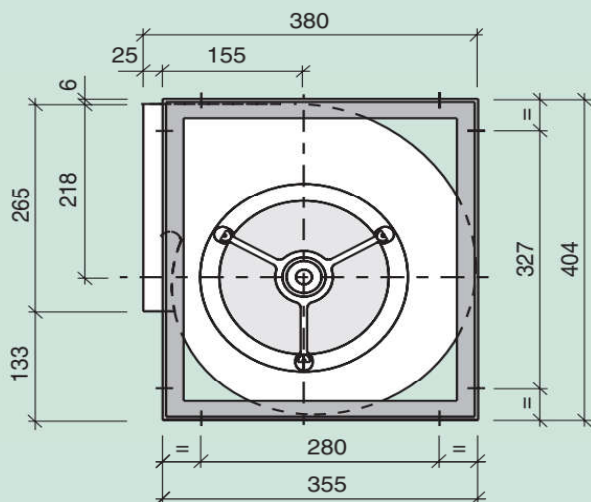


Fan	A	B	C
TDA 9/9	550	700	550



TDA 10/10

Serie R



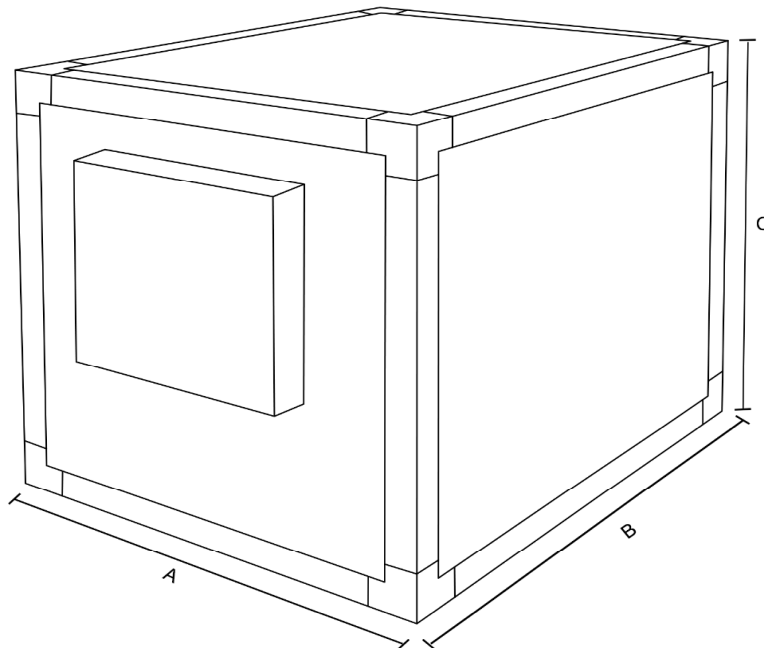
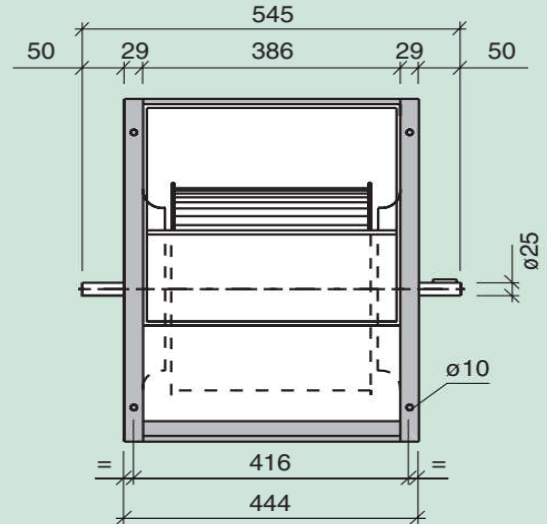
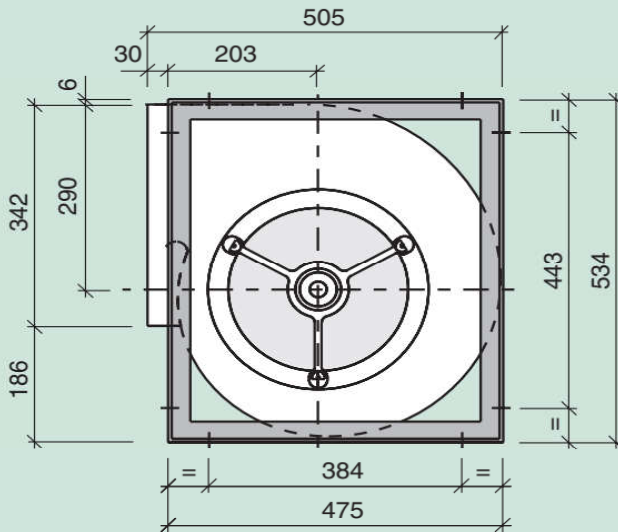
Fan	A	B	C
TDA 10/10	600	750	600





TDA 12/12

Serie R



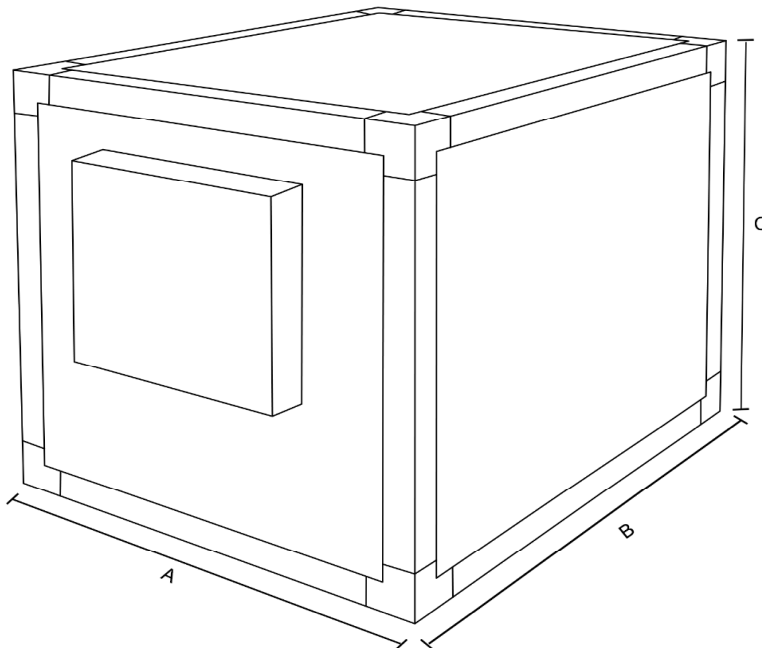
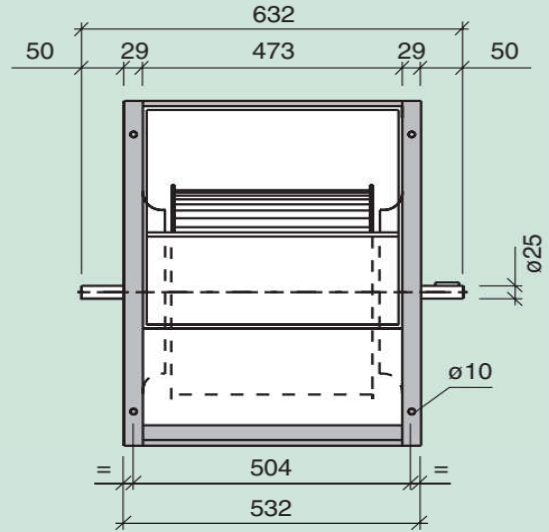
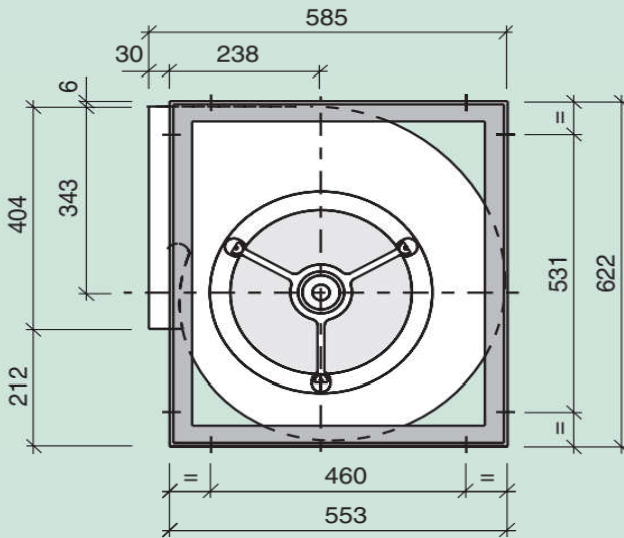
Fan	A	B	C
TDA 12/12	690	880	660





TDA 15/15

Serie R



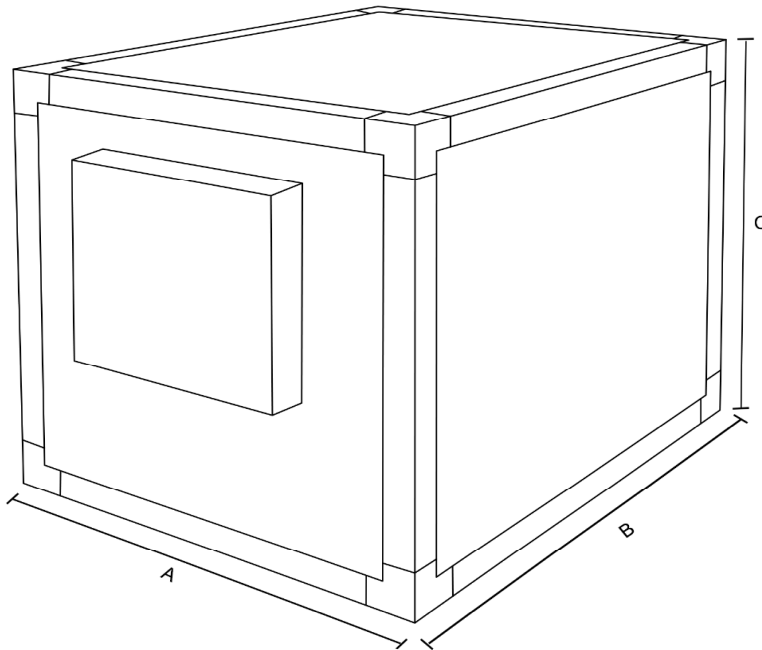
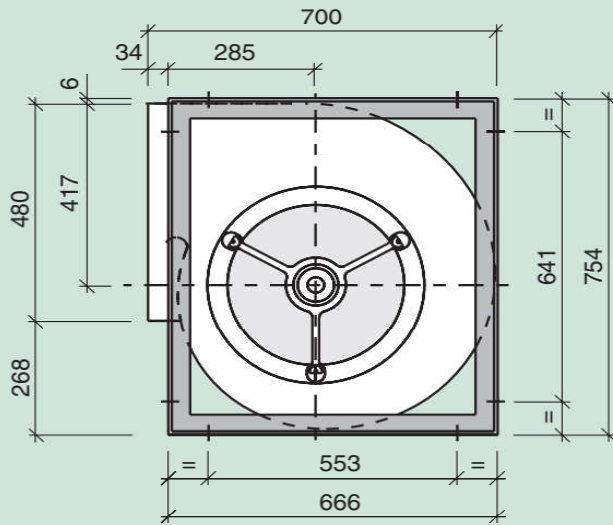
Fan	A	B	C
TDA 15/15	850	1000	750





TDA 18/18

Serie R

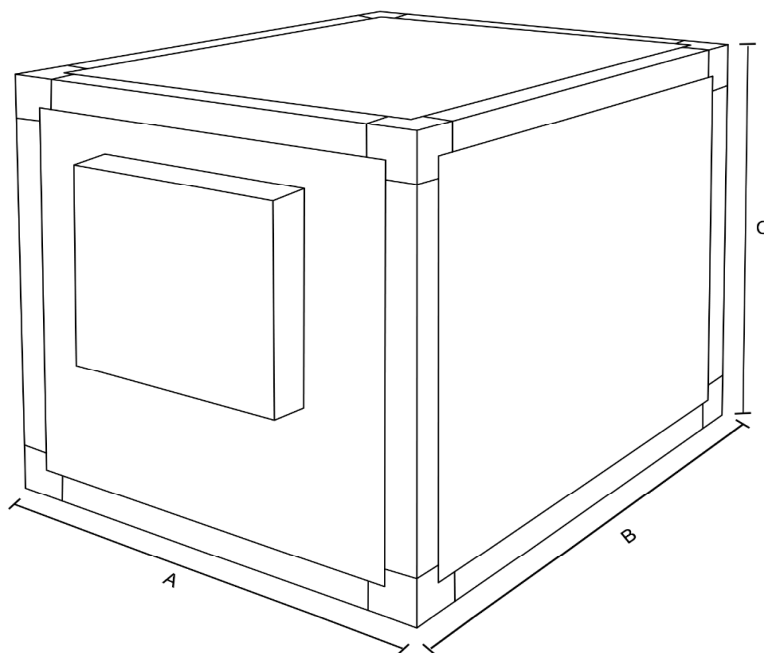
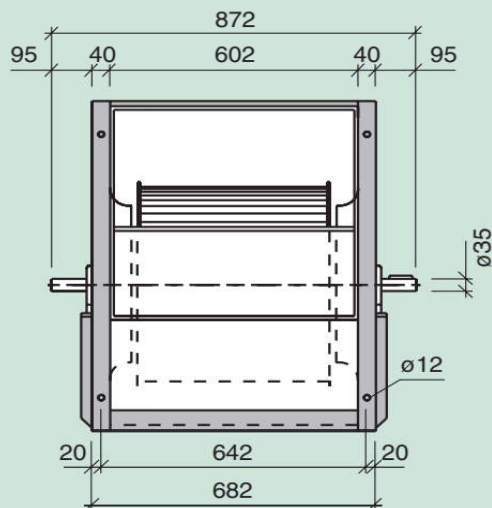
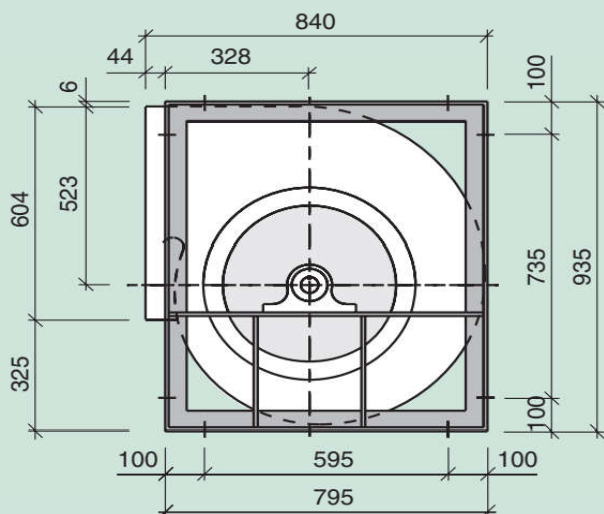


Fan	A	B	C
TDA 18/18	1000	1165	880



TDA 20/20

Serie R

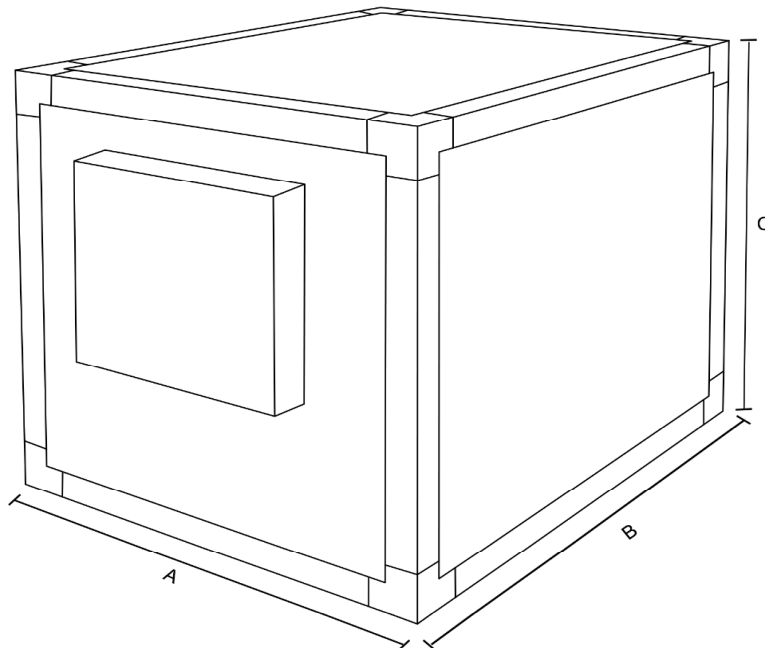
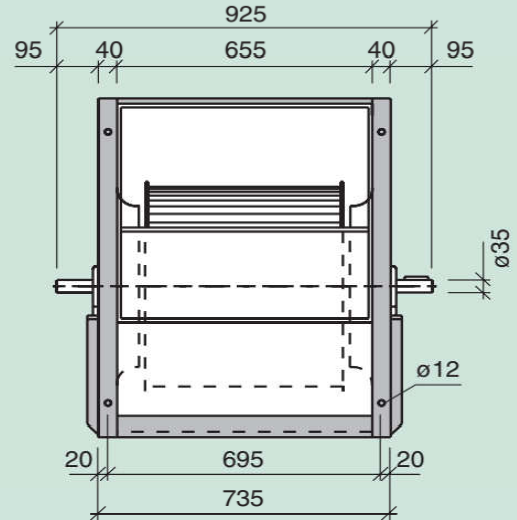
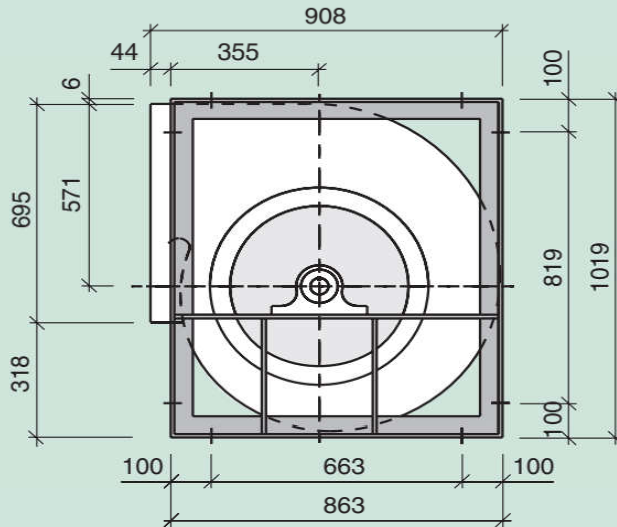


Fan	A	B	C
TDA 20/20	1100	1400	1160



TDA 22/22

Serie R



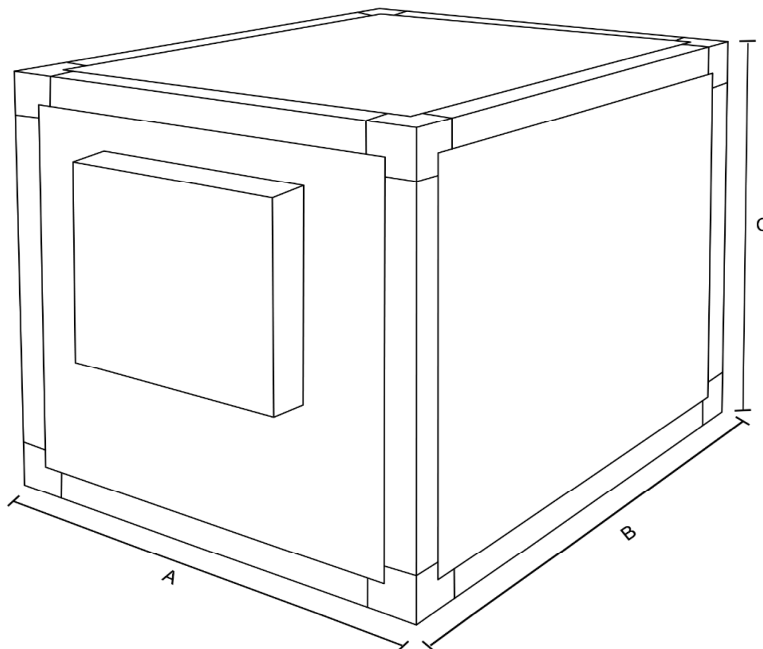
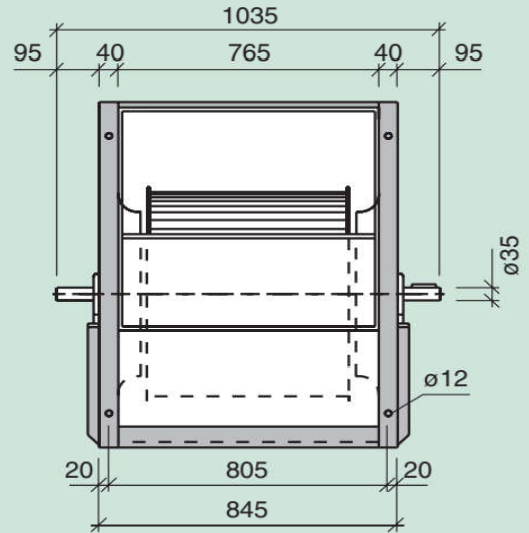
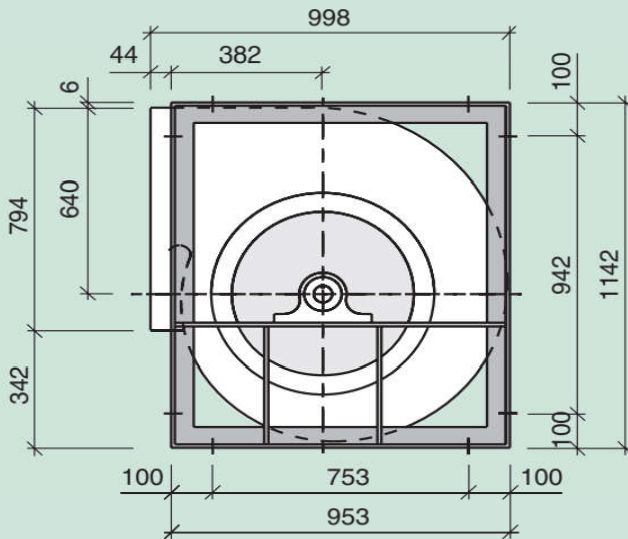
Fan	A	B	C
TDA 22/22	1200	1485	1245





TDA 25/25

Serie R

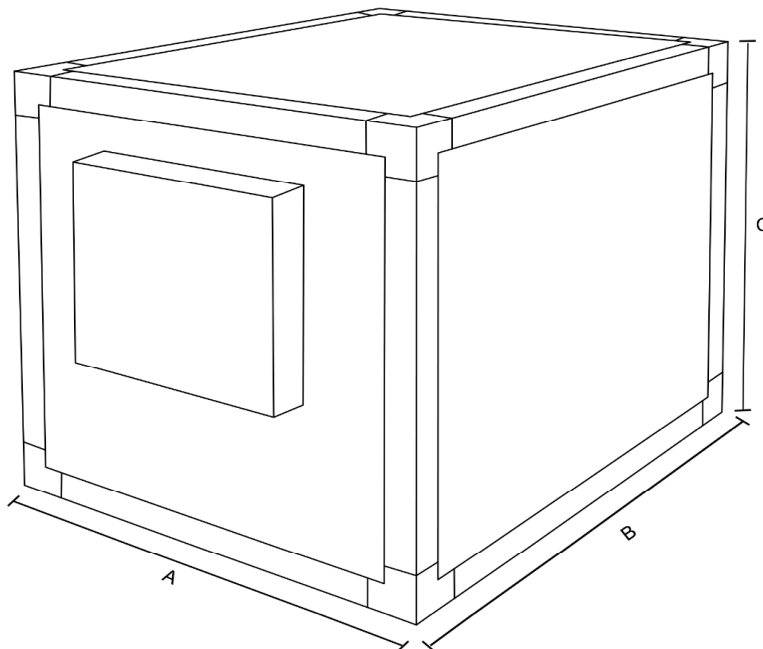
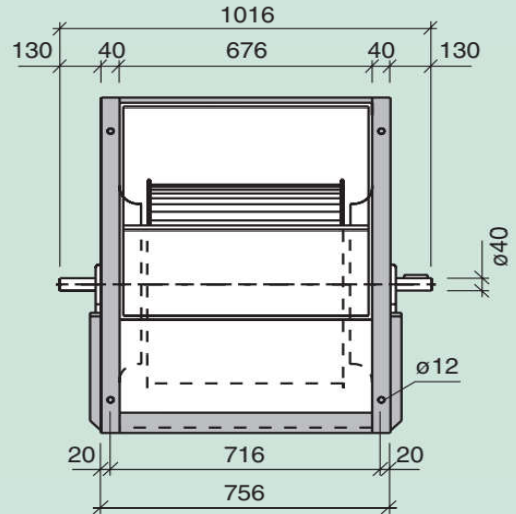
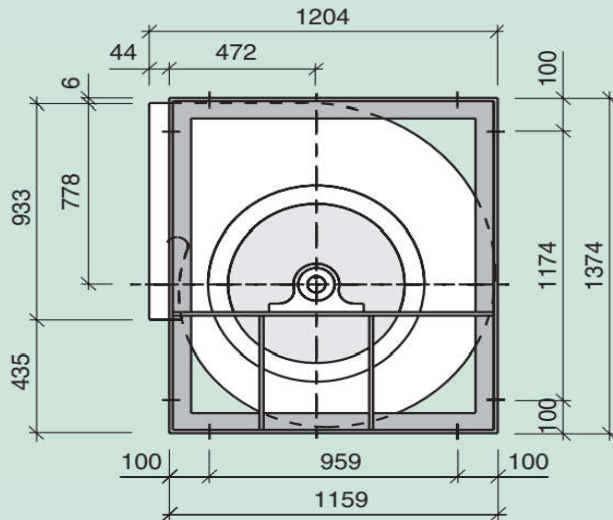


Fan	A	B	C
TDA 25/25	1400	1640	1370



TDA 30/20

Serie R

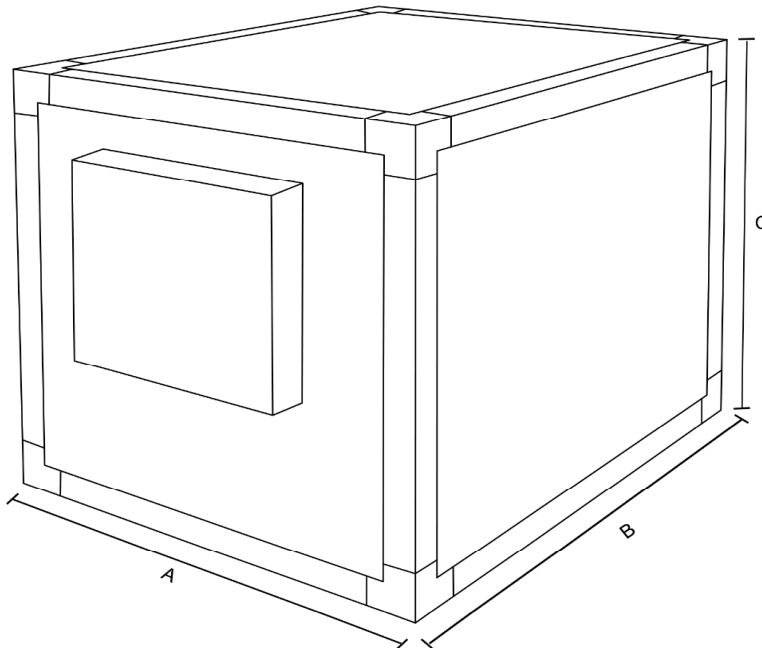
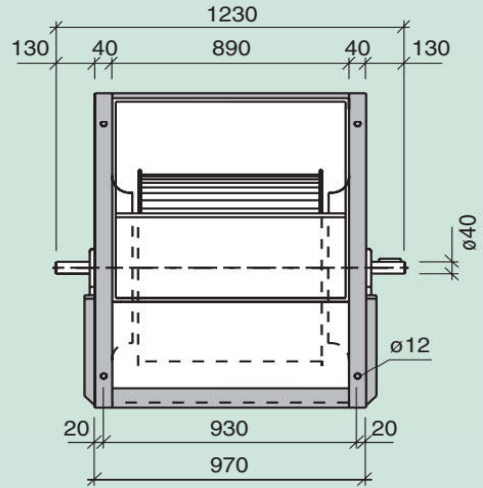
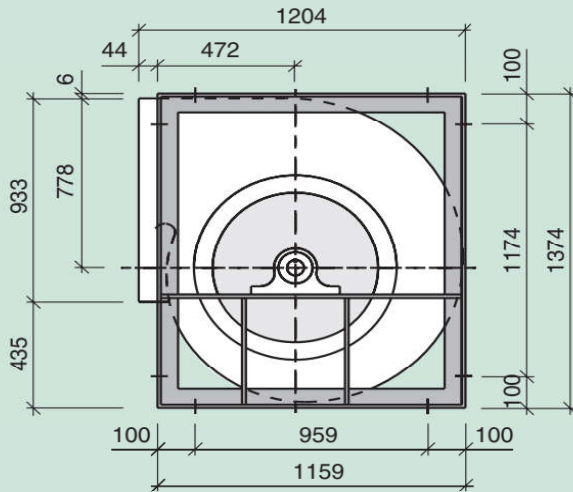


Fan	A	B	C
TDA 30/20	1340	1845	1600



TDA 30/28

Serie R



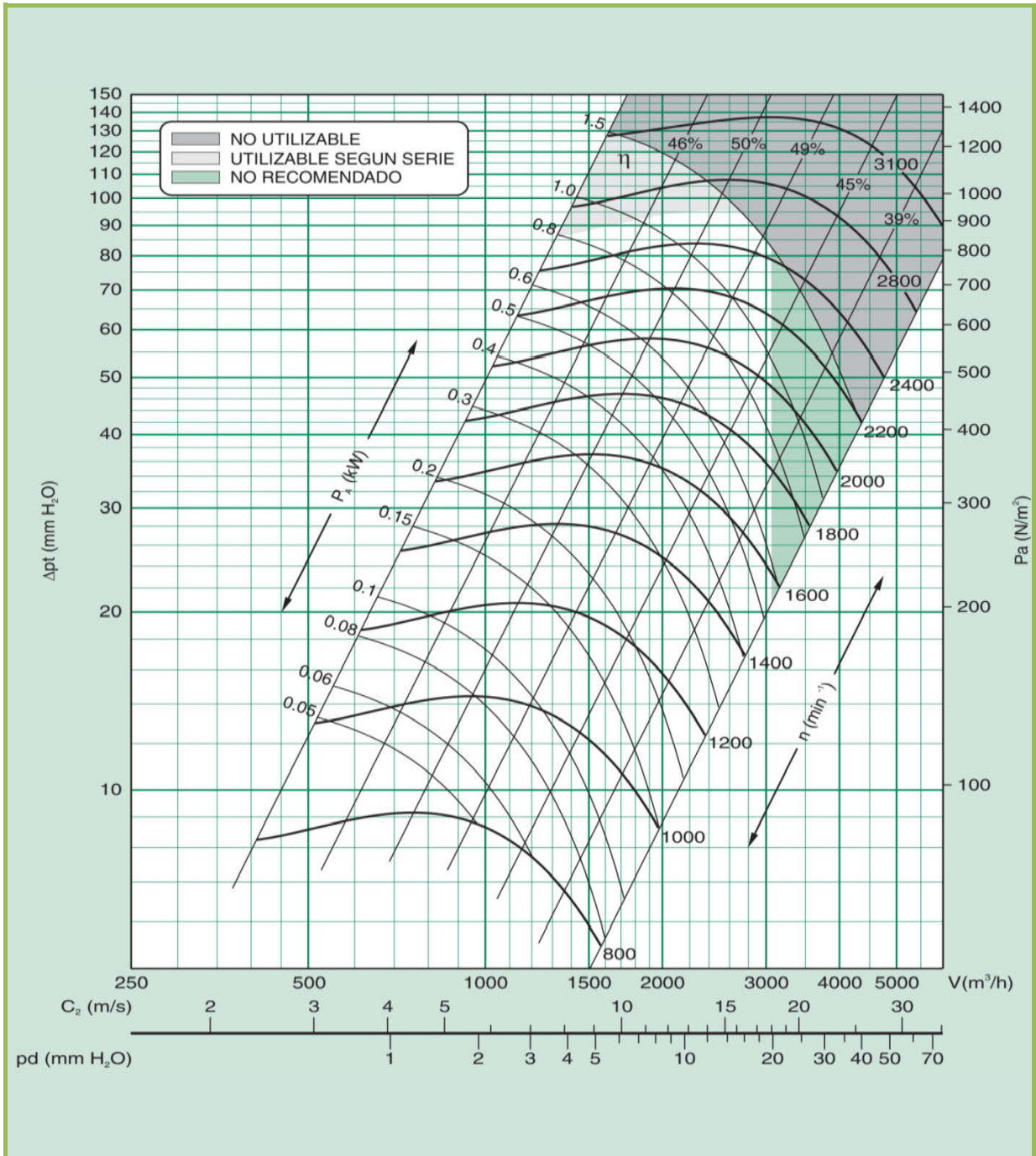
Fan	A	B	C
TDA 30/28	1650	1845	1600

TDA 7/7



Series R

Max. electric power input	Revolutions Max	Moment of inertia	Tip speed	Weight
P max kW	RPM max (min ⁻¹)	PD ² /4 Kg m ²	u m/s	Kg
1,5	3100	0,02	n (min ⁻¹) x 0.0097	7

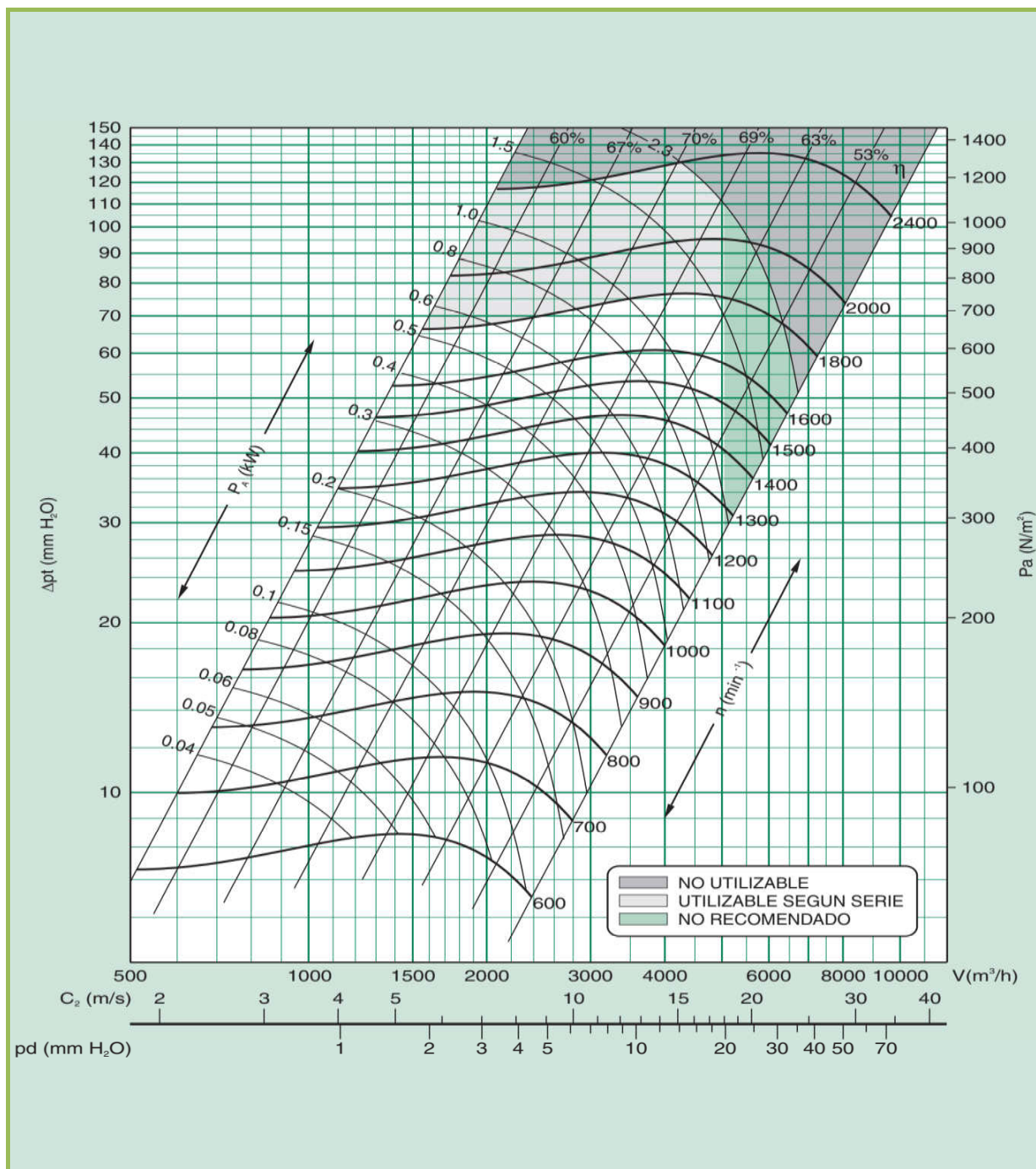


TDA 9/9

Series R



Max. electric power input	Revolutions Max	Moment of inertia	Tip speed	Weight
P max kW	RPM max (min ⁻¹)	PD ² / 4 Kg m ²	u m/s	Kg
2,3	2400	0,06	n (min ⁻¹) x 0,0140	

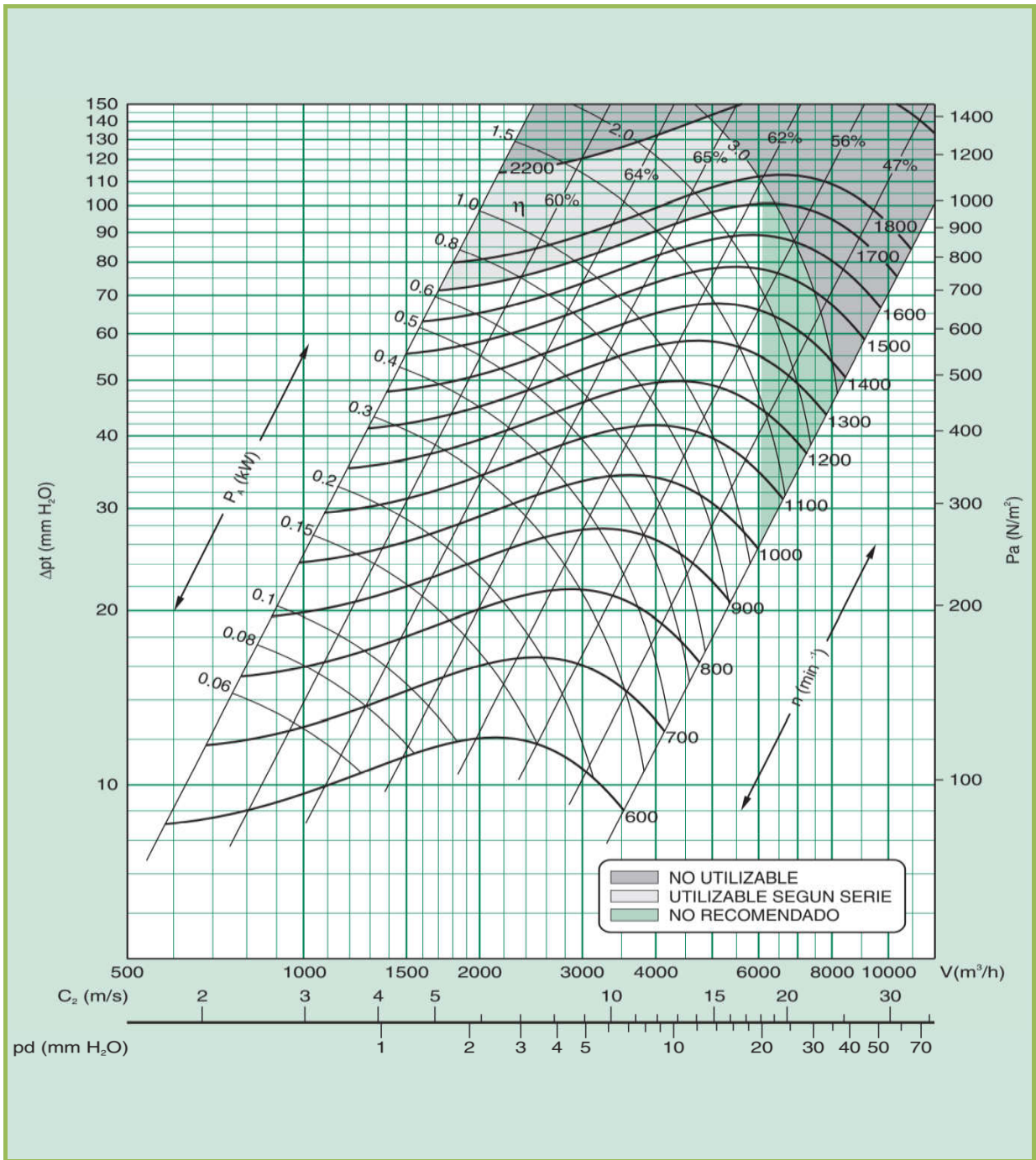


TDA 10/10

Series R



Max. electric power input	Revolutions Max	Moment of inertia	Tip speed	Weight
P max kW	RPM max (min ⁻¹)	PD ² /4	u	Kg
		Kg m ²	m/s	
3	2200	0,06	n (min ⁻¹) x 0,0140	14

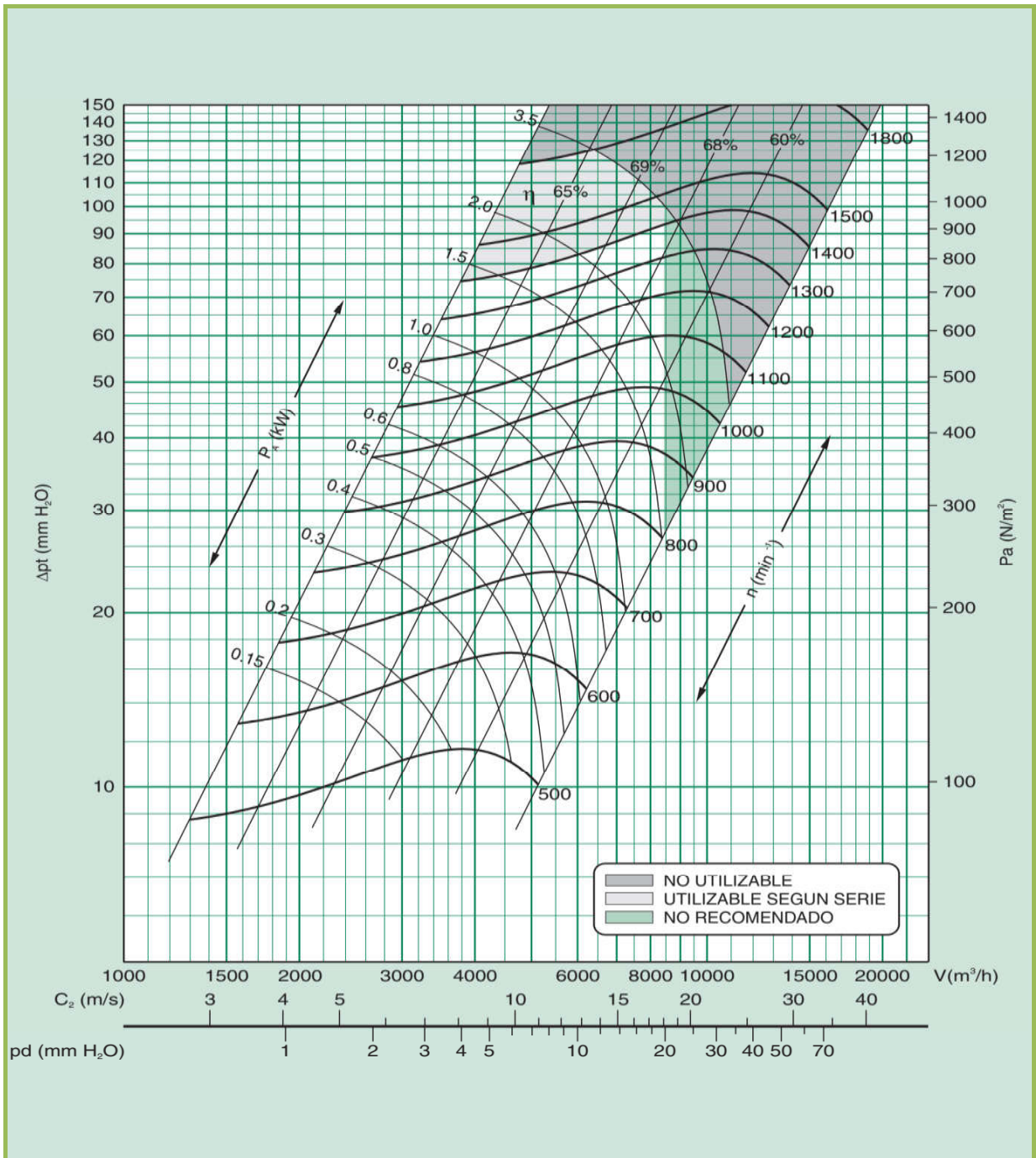


TDA 12/12



Series R

Max. electric power input	Revolutions Max	Moment of inertia	Tip speed	Weight
P max kW	RPM max (min ⁻¹)	PD ² /4	u	Kg
		Kg m ²	m/s	
3,5	1800	0,11	n (min ⁻¹) x 0,0169	19,5

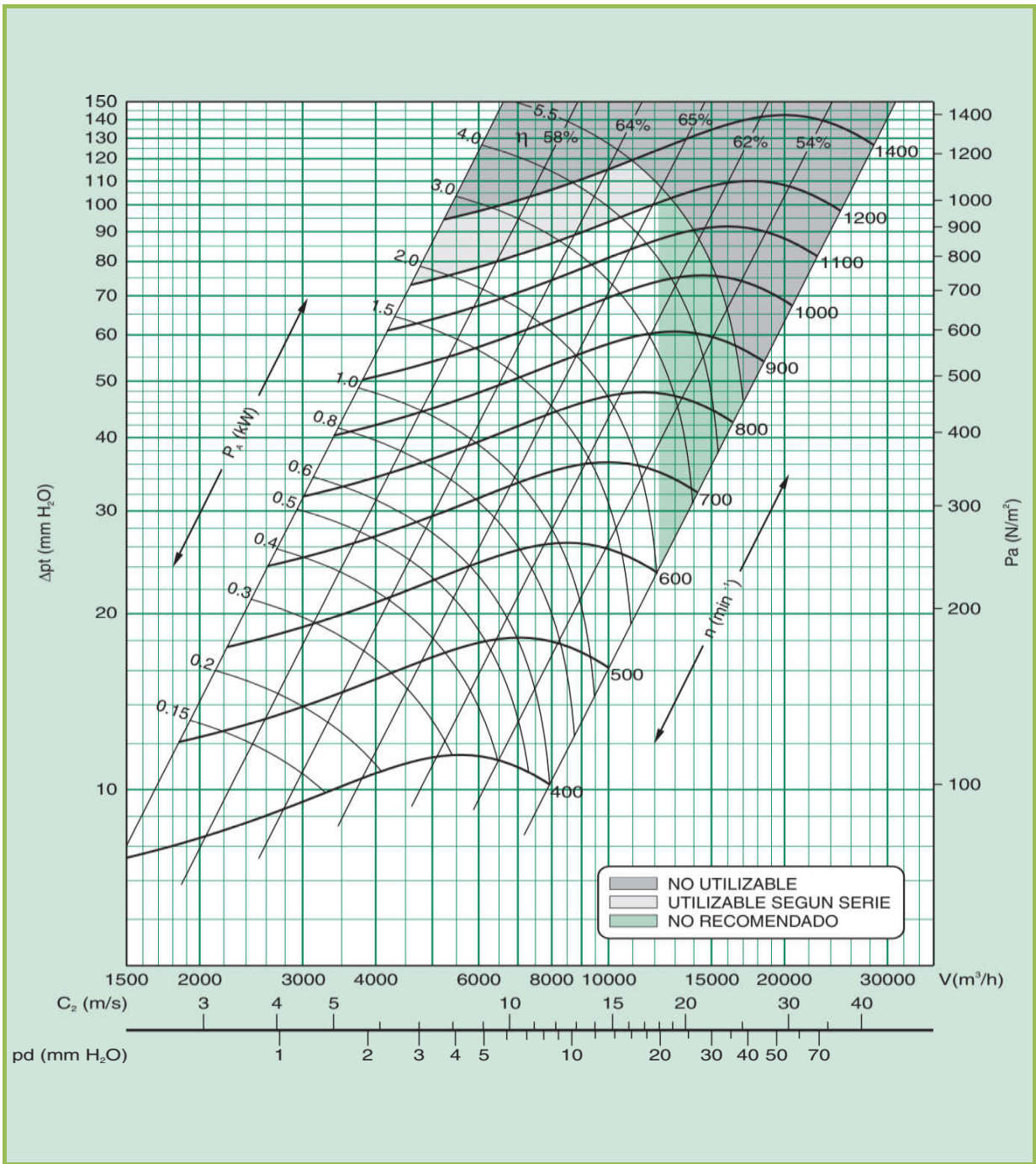


TDA 15/15



Series R

Max. electric power input	Revolutions Max	Moment of inertia	Tip speed	Weight
P max kW	RPM max (min ⁻¹)	PD ² /4	u	Kg
		Kg m ²	m/s	
5.5	1400	0,27	n (min ⁻¹) x 0,0203	28,5

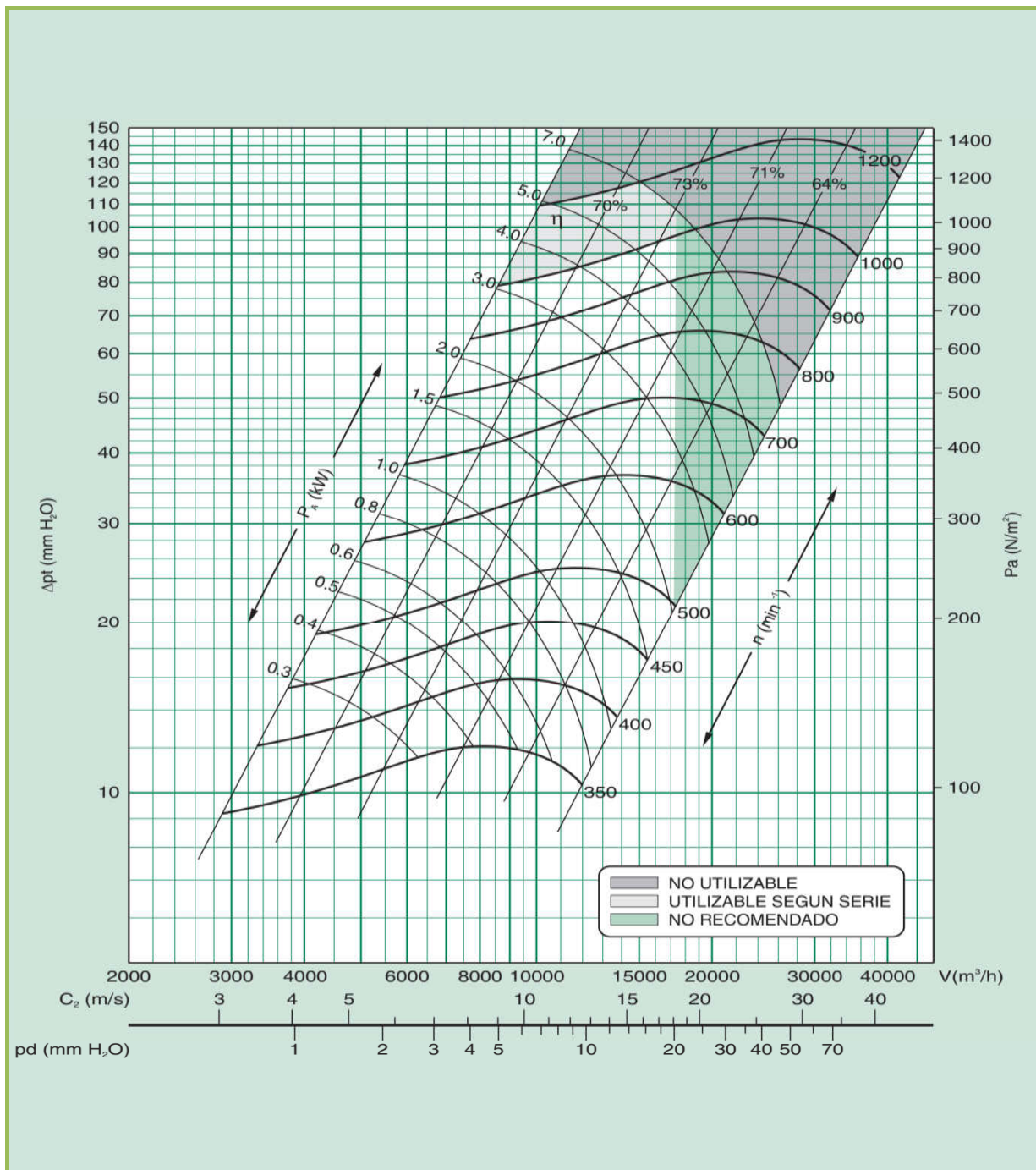


TDA 18/18



Series R

Max. electric power input	Revolutions Max	Moment of inertia	Tip speed	Weight
P max kW	RPM max (min ⁻¹)	PD ² / 4	u	Kg
		Kg m ²	m/s	
7	1200	0,59	n (min ⁻¹) x 0,0241	40

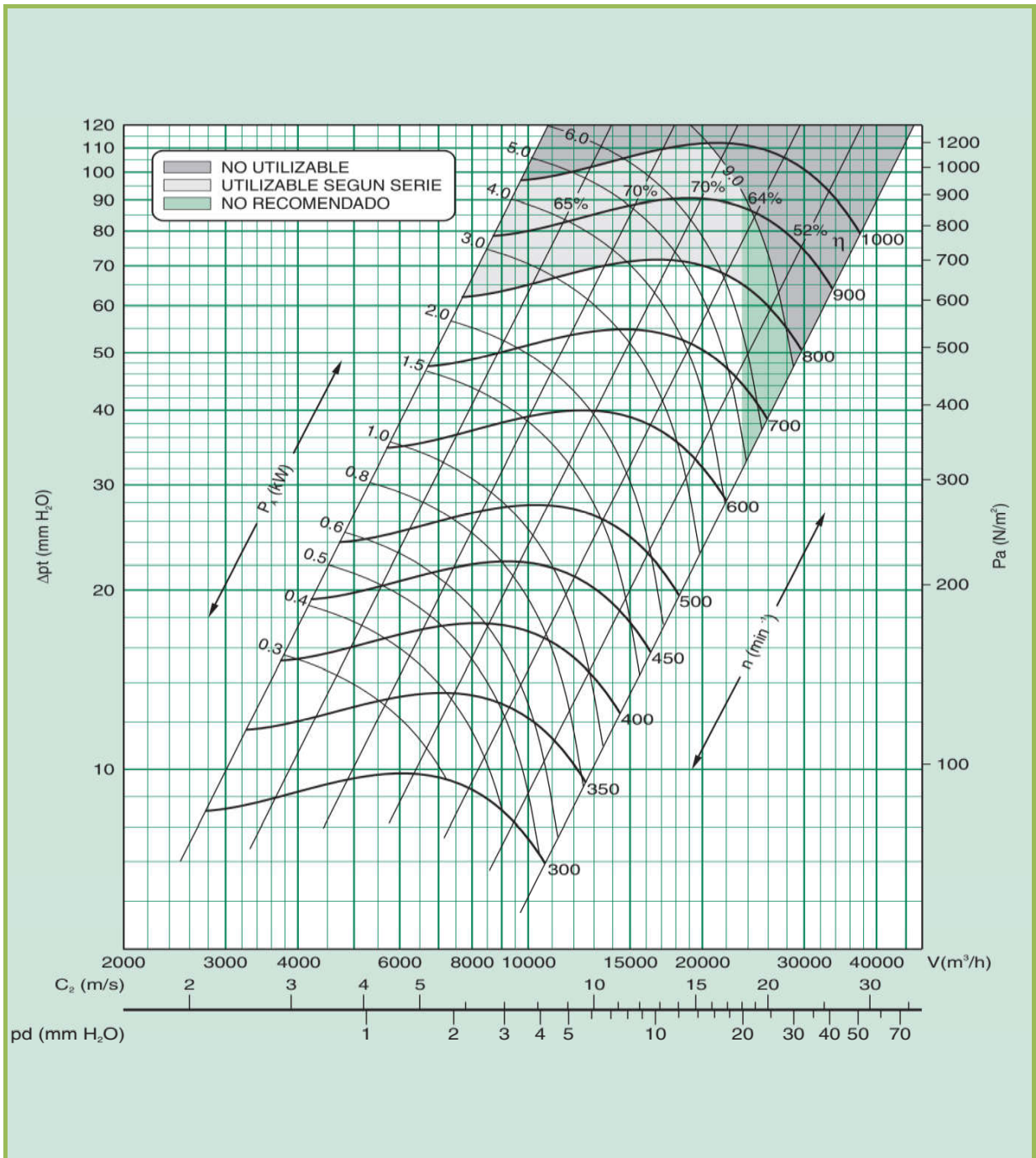


TDA 20/20

Series R



Max. electric power input	Revolutions Max	Moment of inertia	Tip speed	Weight
P max kW	RPM max (min ⁻¹)	PD ² /4	u	Kg
		Kg m ²	m/s	
9	900	1,14	n (min ⁻¹) x 0,0288	84

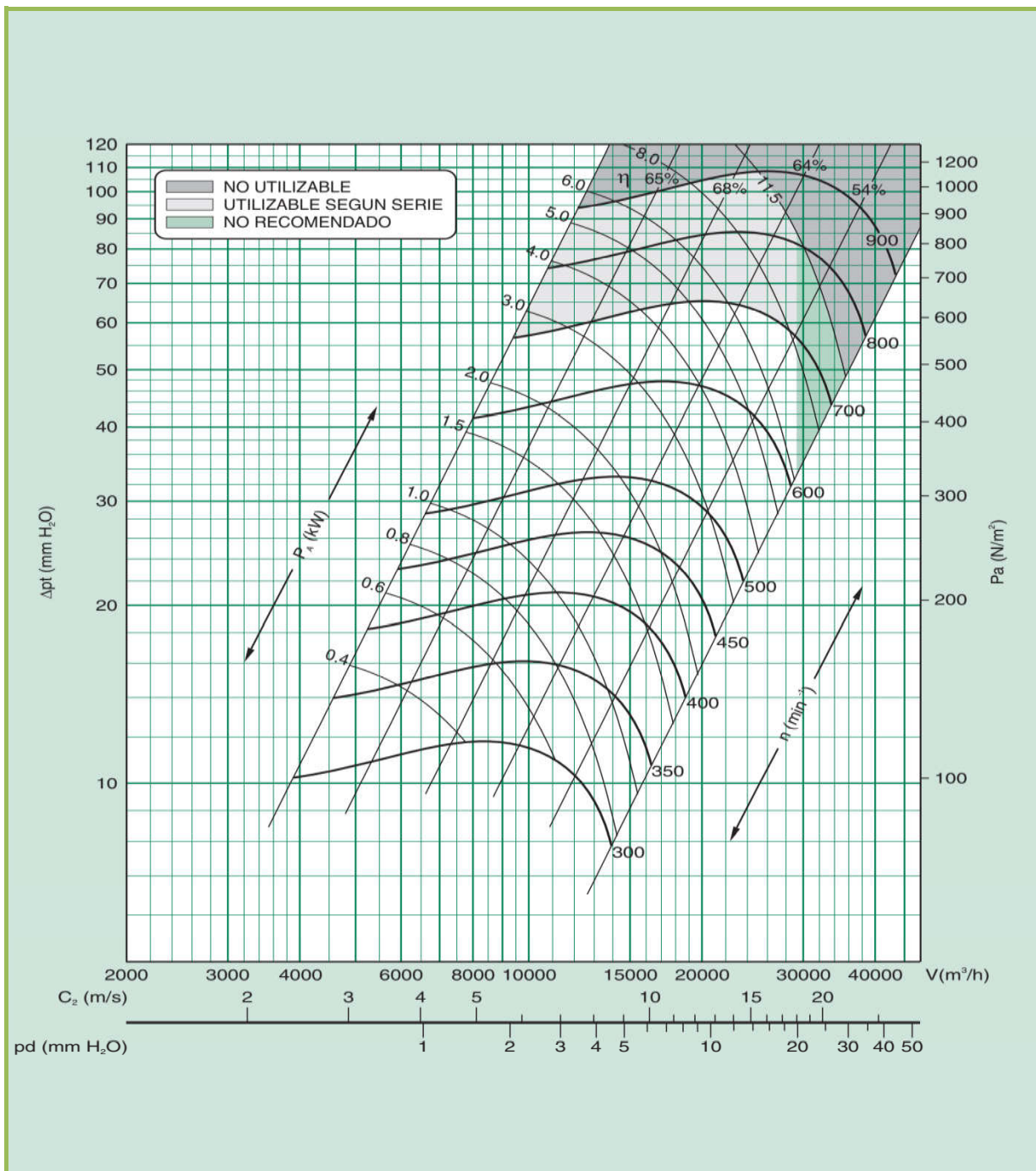


TDA 22/22



Series R

Max. electric power input	Revolutions Max	Moment of inertia	Tip speed	Weight
P max kW	RPM max (min ⁻¹)	PD ² /4 Kg m ²	u m/s	Kg
11,5	900	1,60	n (min ⁻¹) x 0,0314	94

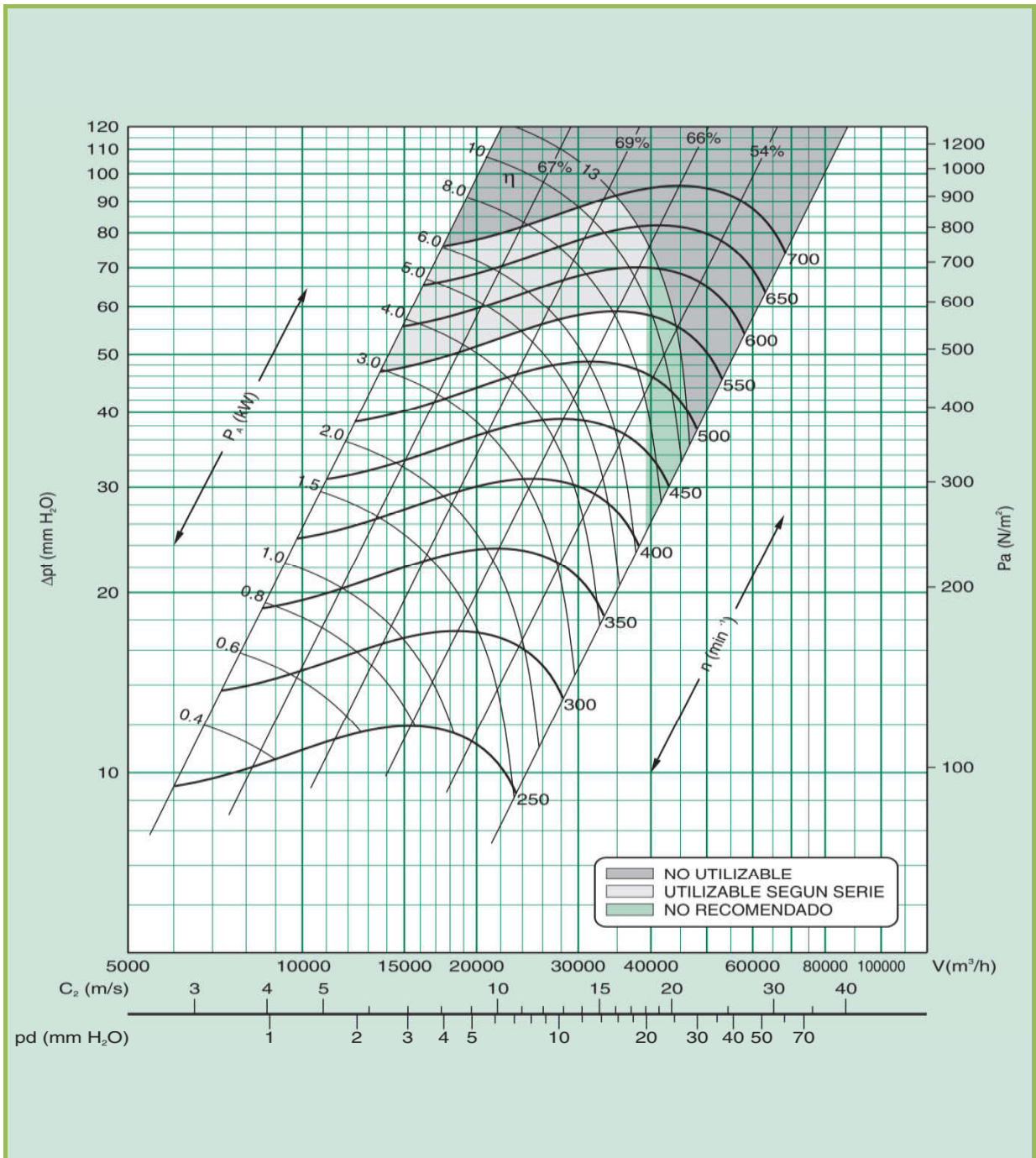


TDA 25/25



Series R

Max. electric power input	Revolutions Max	Moment of inertia	Tip speed	Weight
P max kW	RPM max (min ⁻¹)	PD ² /4	u	Kg
		Kg m ²	m/s	
13	700	2,49	n (min ⁻¹) x 0,0351	113

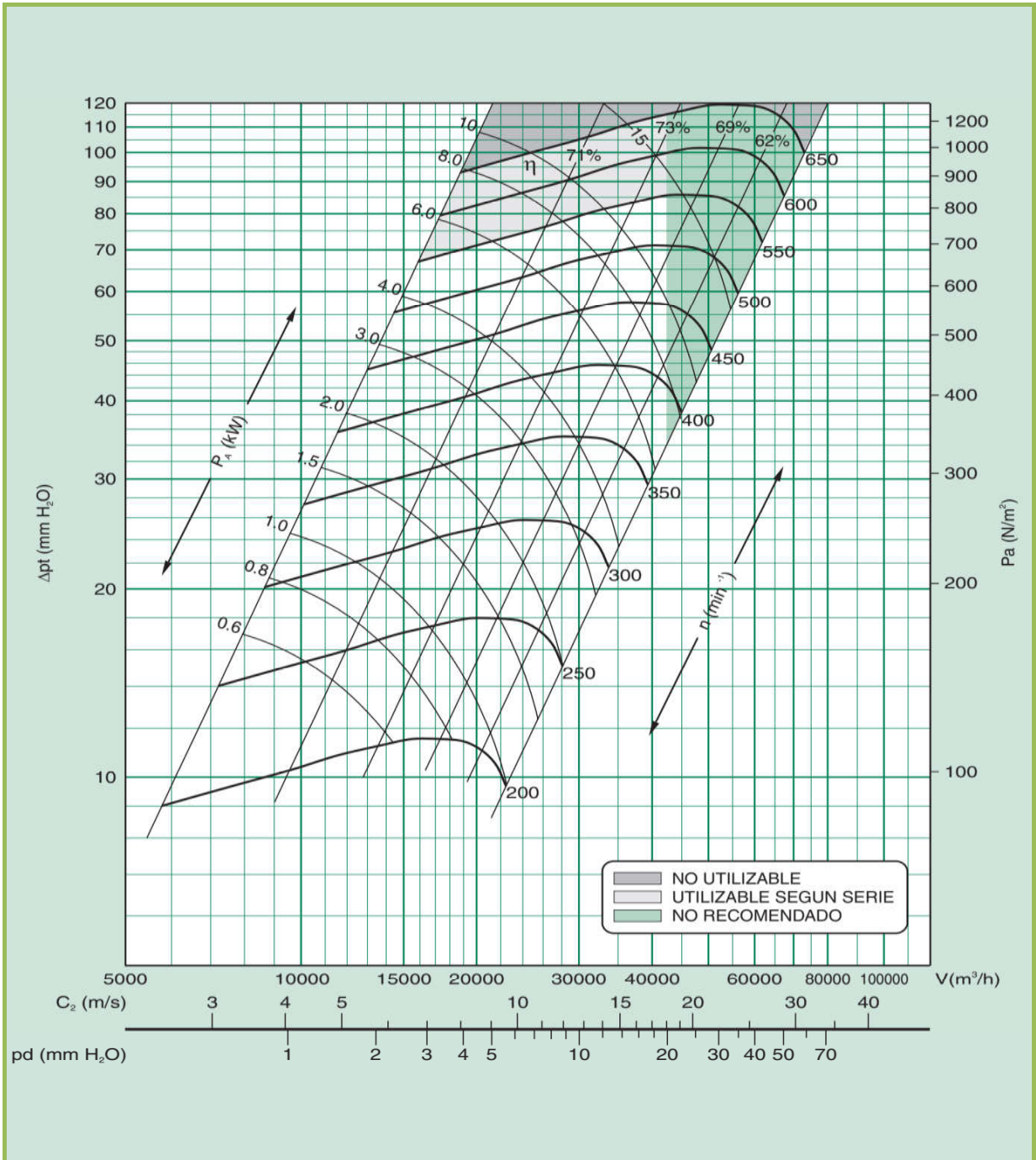


TDA 30/20

Series R



Max. electric power input	Revolutions Max	Moment of inertia	Tip speed	Weight
P max kW	RPM max (min ⁻¹)	PD ² /4	u	Kg
		Kg m ²	m/s	
15	600	4,41	n (min ⁻¹) x 0,0419	113



TDA 30/28



Series R

Max. electric power input	Revolutions Max	Moment of inertia	Tip speed	Weight
P max kW	RPM max (min ⁻¹)	PD ² /4	u	Kg
		Kg m ²	m/s	
15	600	4,49	n (min ⁻¹) x 0,0419	145

