

## TSA

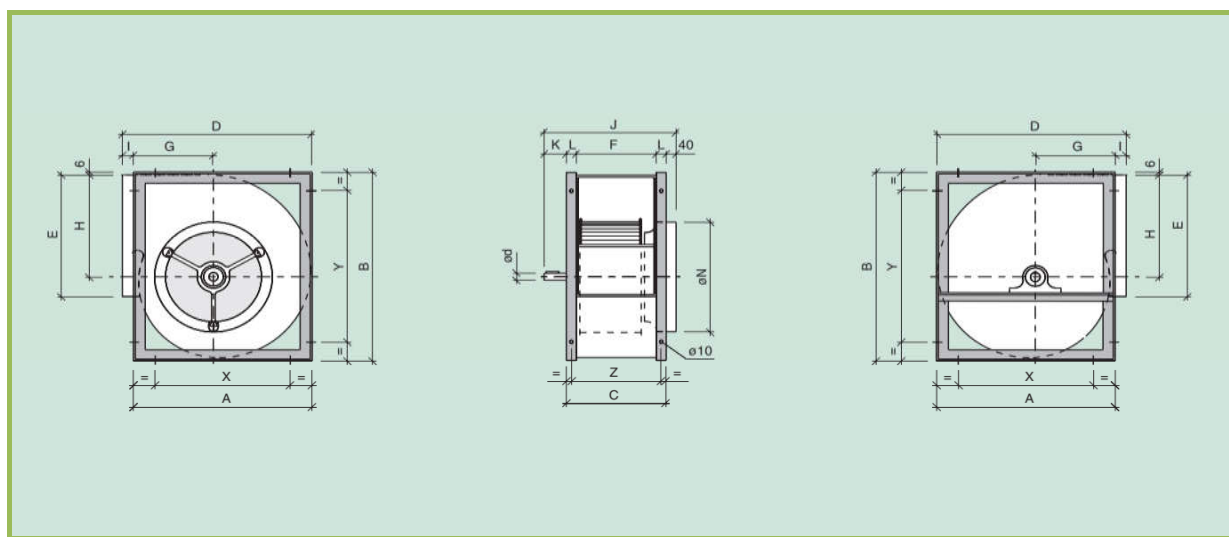
### Transmission motor

#### Single inlet series

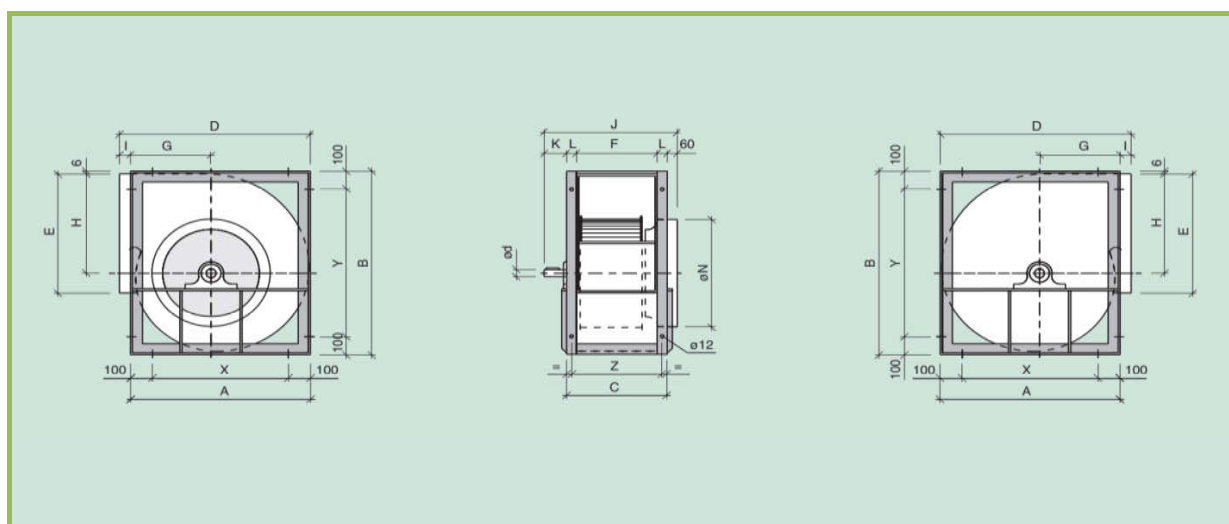




FAN	A	B	C	D	E	F	G	H	I	J	K	∅d	L	∅N	X	Y	Z
TSA 9/4	355	404	217	380	265	169	155	218	25	297	40	20	24	248	280	327	193
TSA 10/5	402	452	230	432	290	182	177	245	30	310	40	20	24	278	326	377	206
TSA 12/6	475	534	268	505	342	210	203	290	30	358	50	25	29	313	384	453	240
TSA 15/7	553	622	329	583	404	271	238	343	30	417	50	25	29	398	460	531	300
TSA 18/9	666	754	368	700	480	298	285	417	34	458	50	25	35	448	553	641	333



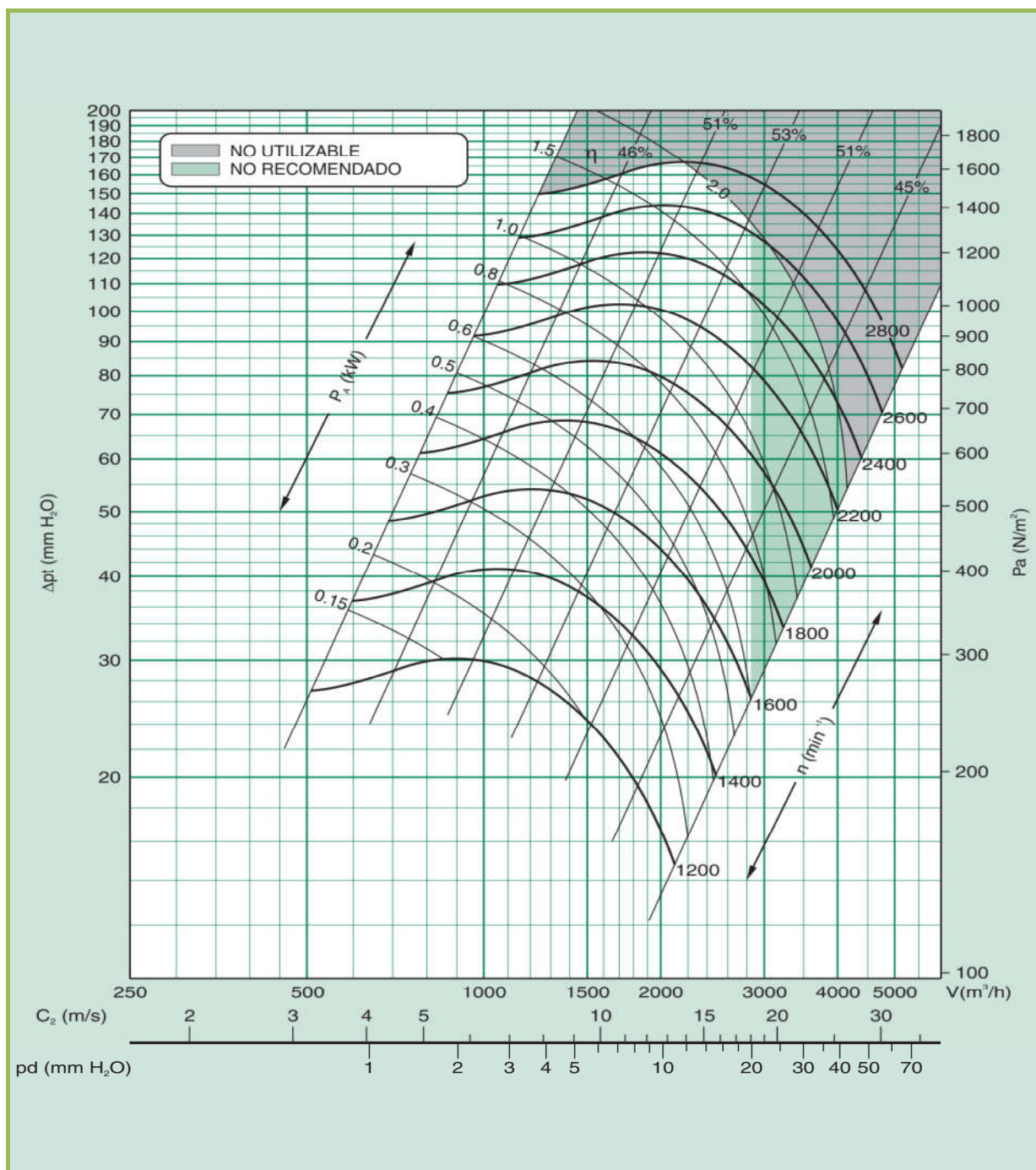
FAN	A	B	C	D	E	F	G	H	I	J	K	∅d	L	∅N	X	Y	Z
TSA 20/10	795	935	395	840	604	315	328	523	45	550	95	35	40	558	595	735	359
TSA 22/11	863	1019	430	908	695	350	354	571	45	583	95	35	40	628	663	819	392
TSA 25/13	953	1142	487	998	794	407	382	640	45	642	95	35	40	708	753	942	451
TSA 30/14	1159	1374	547	1204	933	467	472	778	45	734	130	40	40	798	959	1174	508



TSA 9/4



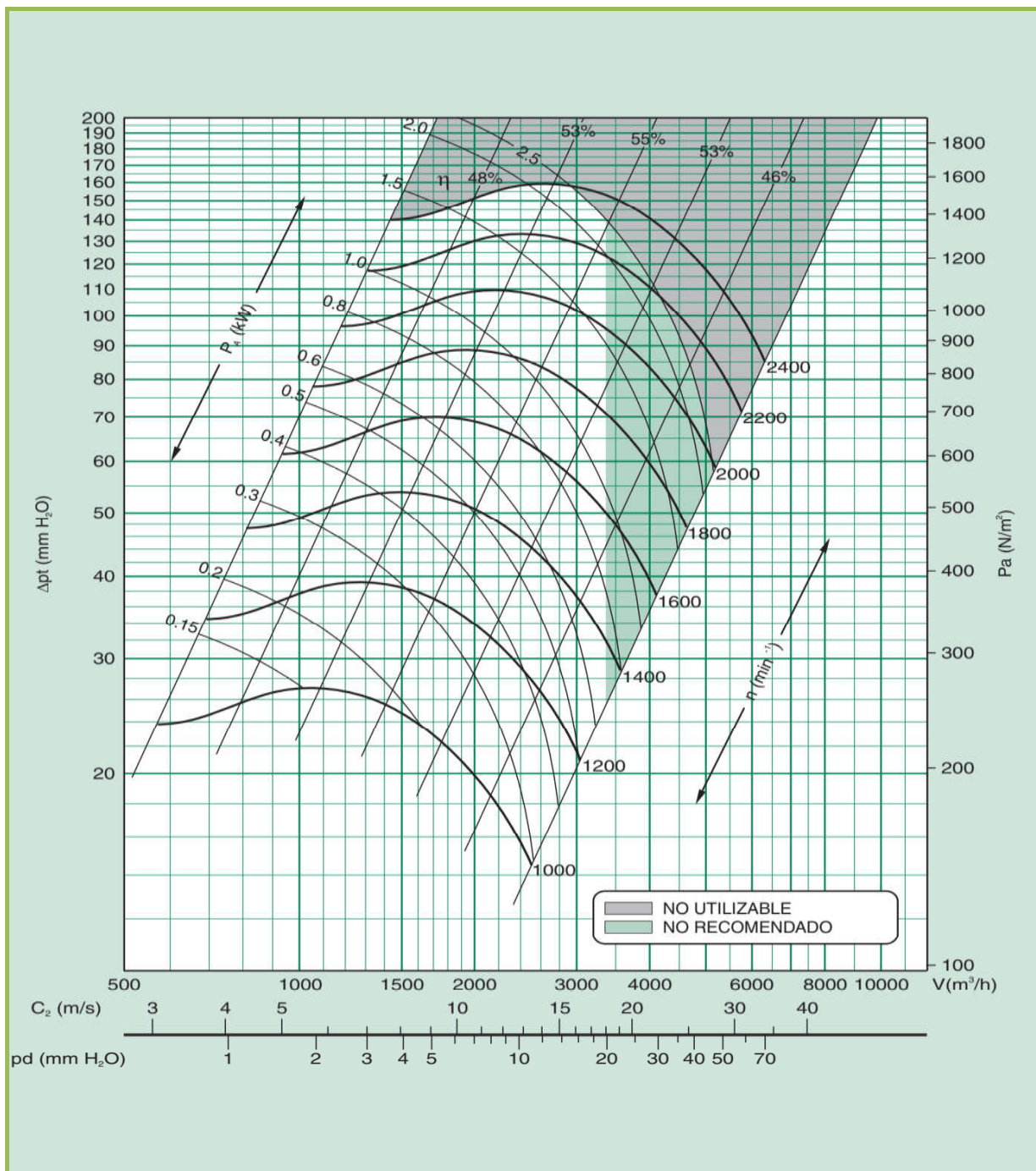
Max. electric power input	Revolutions Max	Moment of inertia	Tip speed	Weight
P max kW	RPM max (min <sup>-1</sup> )	PD <sup>2</sup> /4	u	Kg
		Kg m <sup>2</sup>	m/s	
2	2800	0,018	n (min <sup>-1</sup> ) x 0.0126	10



TSA 10/5



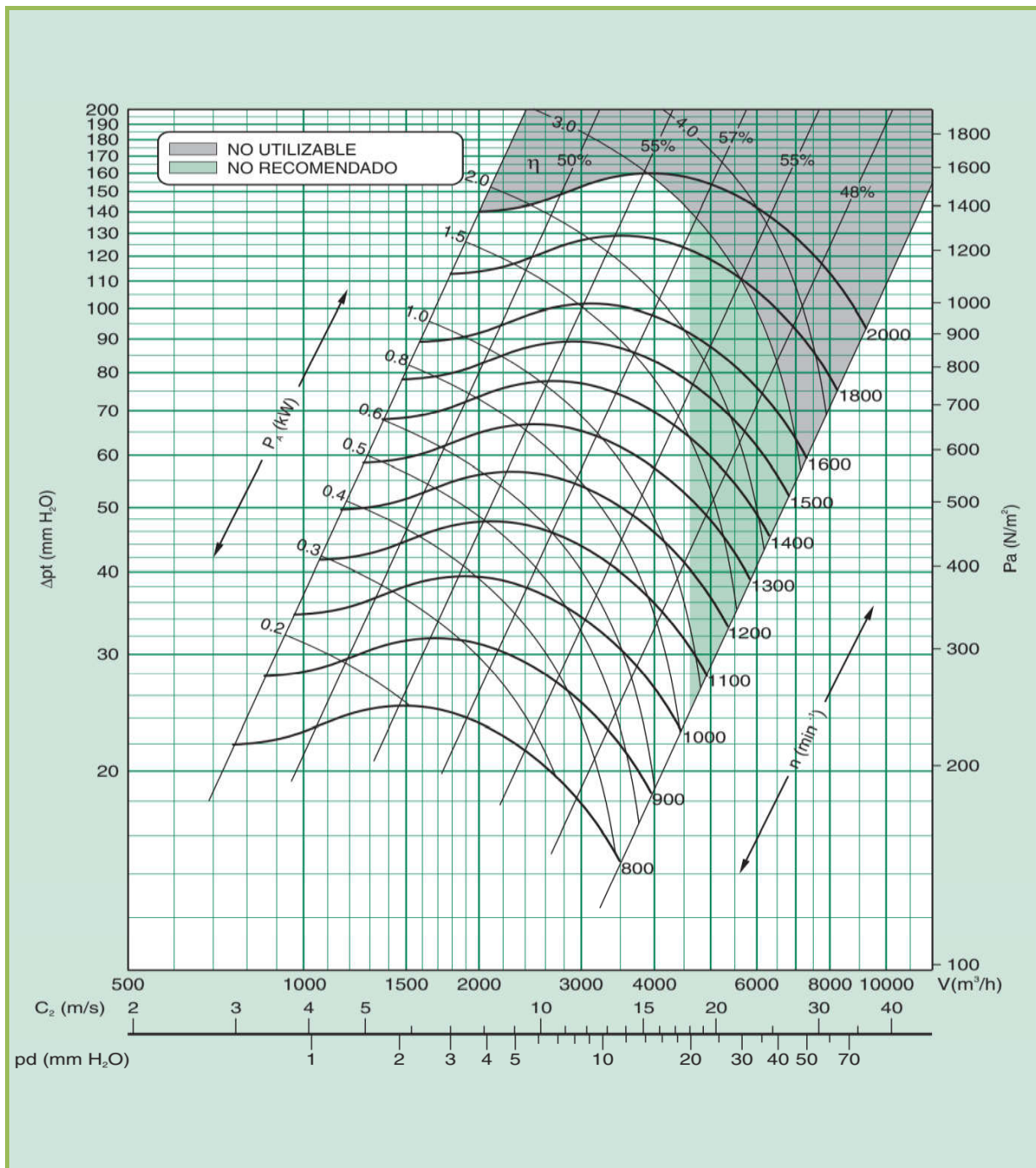
Max. electric power input	Revolutions Max	Moment of inertia	Tip speed	Weight
P max kW	RPM max (min <sup>-1</sup> )	PD <sup>2</sup> /4	u	Kg
		Kg m <sup>2</sup>	m/s	
2,5	2400	0,026	n (min <sup>-1</sup> ) x 0.0140	11



TSA 12/6



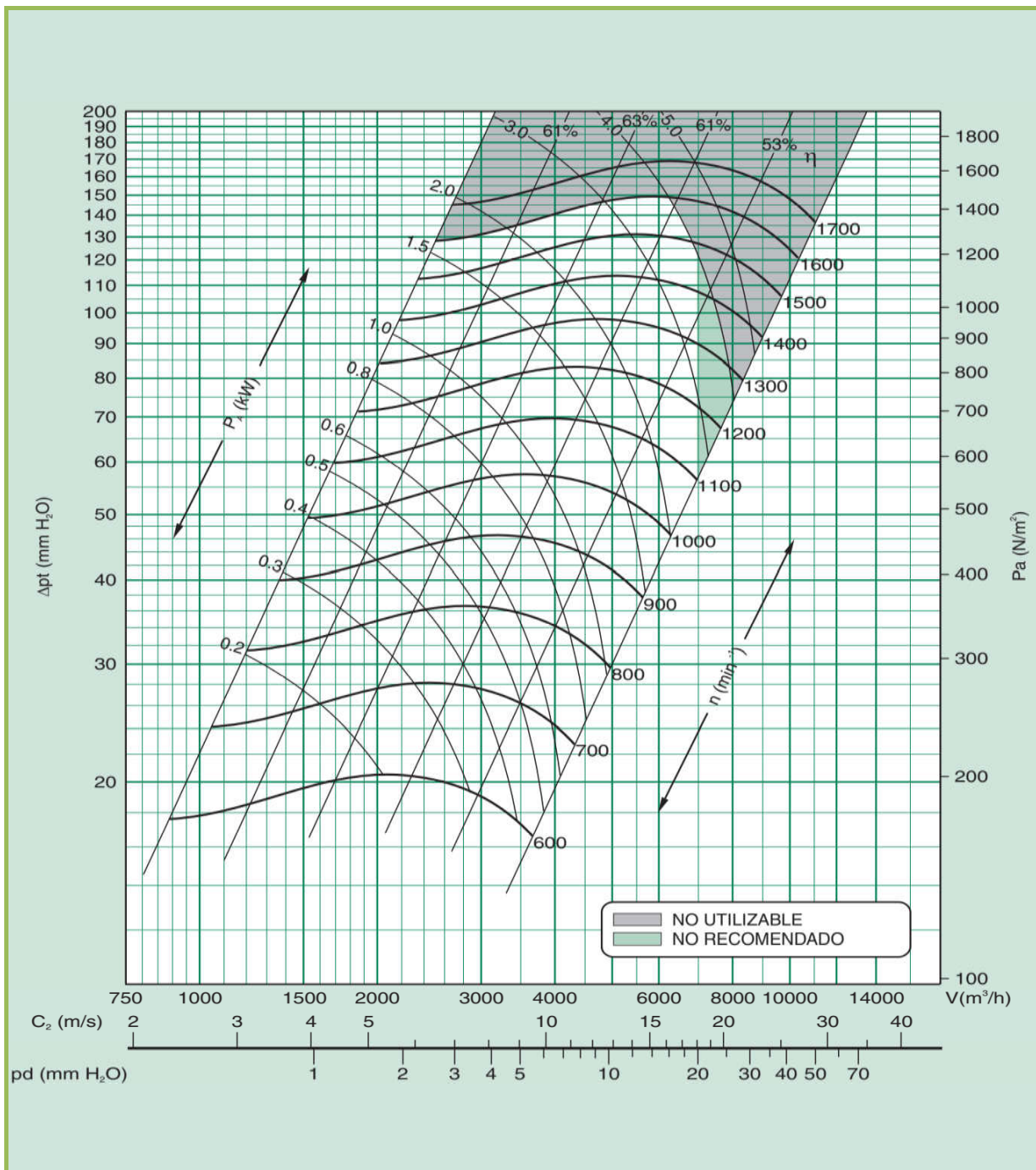
Max. electric power input	Revolutions Max	Moment of inertia	Tip speed	Weight
P max kW	RPM max (min <sup>-1</sup> )	PD <sup>2</sup> /4	u	Kg
		Kg m <sup>2</sup>	m/s	
3	2000	0,074	n (min <sup>-1</sup> ) x 0.0169	15



TSA 15/7



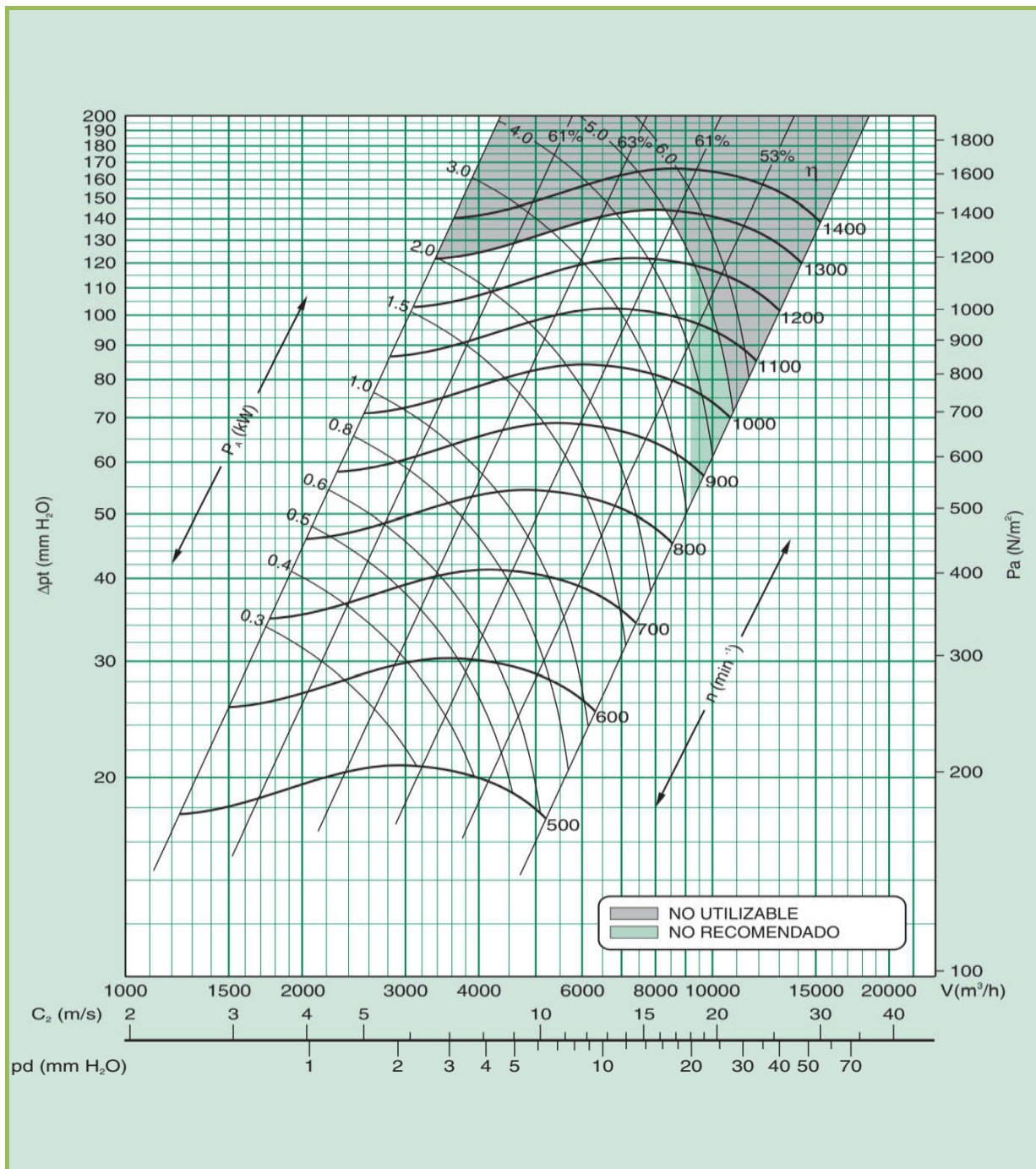
Max. electric power input	Revolutions Max	Moment of inertia	Tip speed	Weight
P max kW	RPM max (min <sup>-1</sup> )	PD <sup>2</sup> /4	u	Kg
		Kg m <sup>2</sup>	m/s	
4	1600	0,168	n (min <sup>-1</sup> ) x 0.0203	23



TSA 18/9



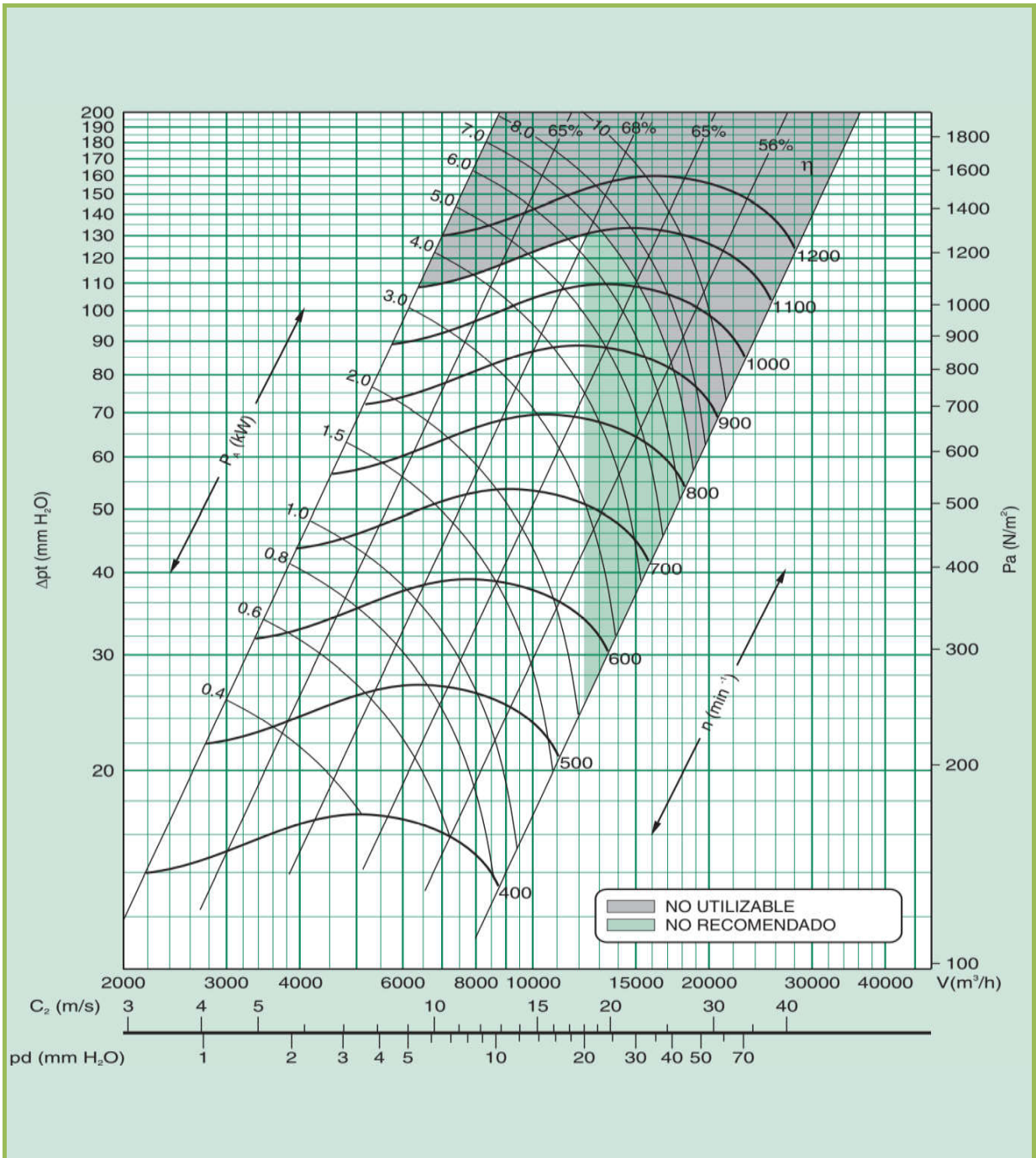
Max. electric power input	Revolutions Max	Moment of inertia	Tip speed	Weight
P max kW	RPM max (min <sup>-1</sup> )	PD <sup>2</sup> /4	u	Kg
		Kg m <sup>2</sup>	m/s	
5	1300	0,369	n (min <sup>-1</sup> ) x 0.0241	30



TSA 20/10



Max. electric power input	Revolutions Max	Moment of inertia	Tip speed	Weight
P max kW	RPM max (min <sup>-1</sup> )	PD <sup>2</sup> /4	u	Kg
		Kg m <sup>2</sup>	m/s	
7	1100	0,586	n (min <sup>-1</sup> ) x 0.0288	68

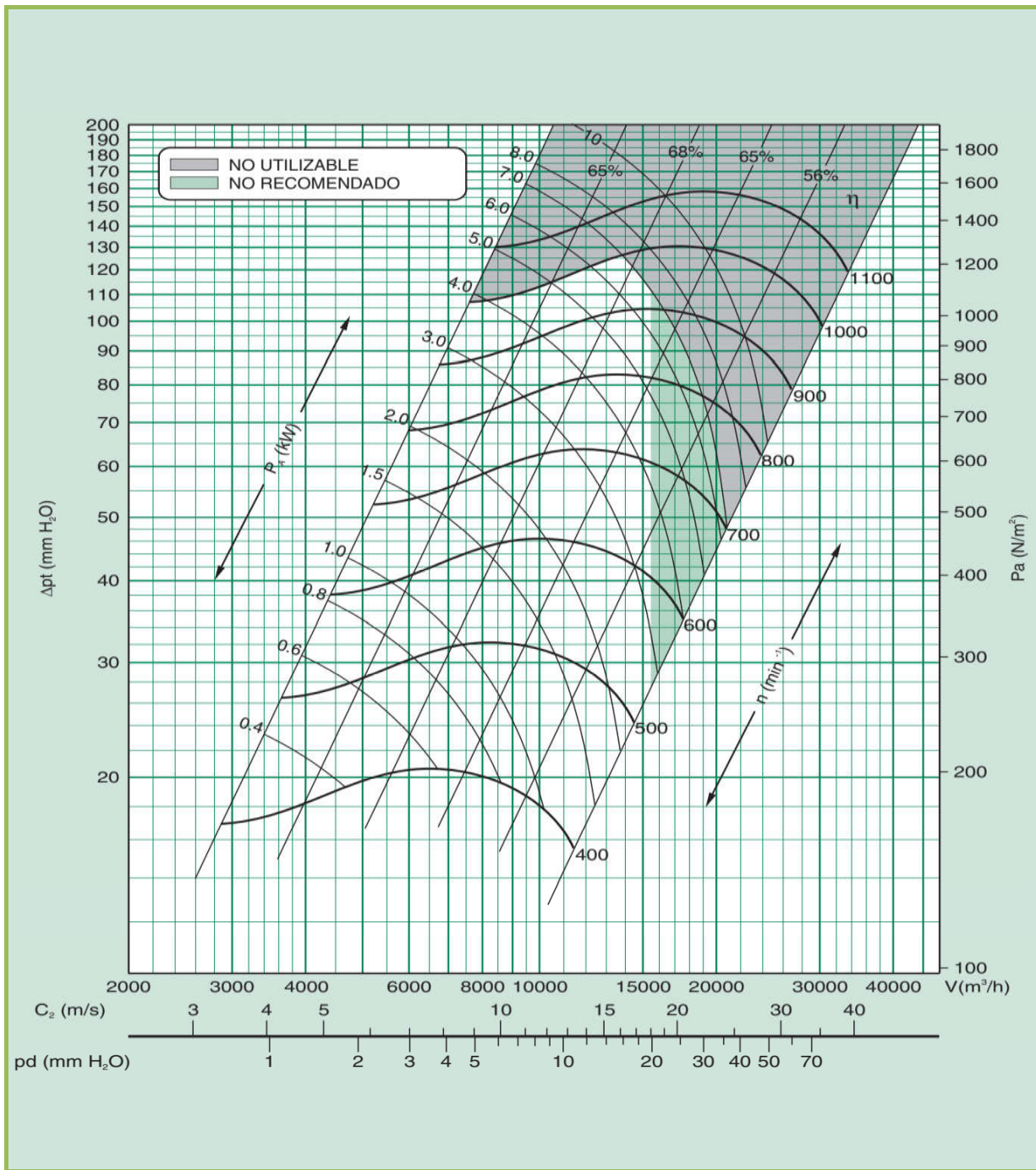




TSA 22/11



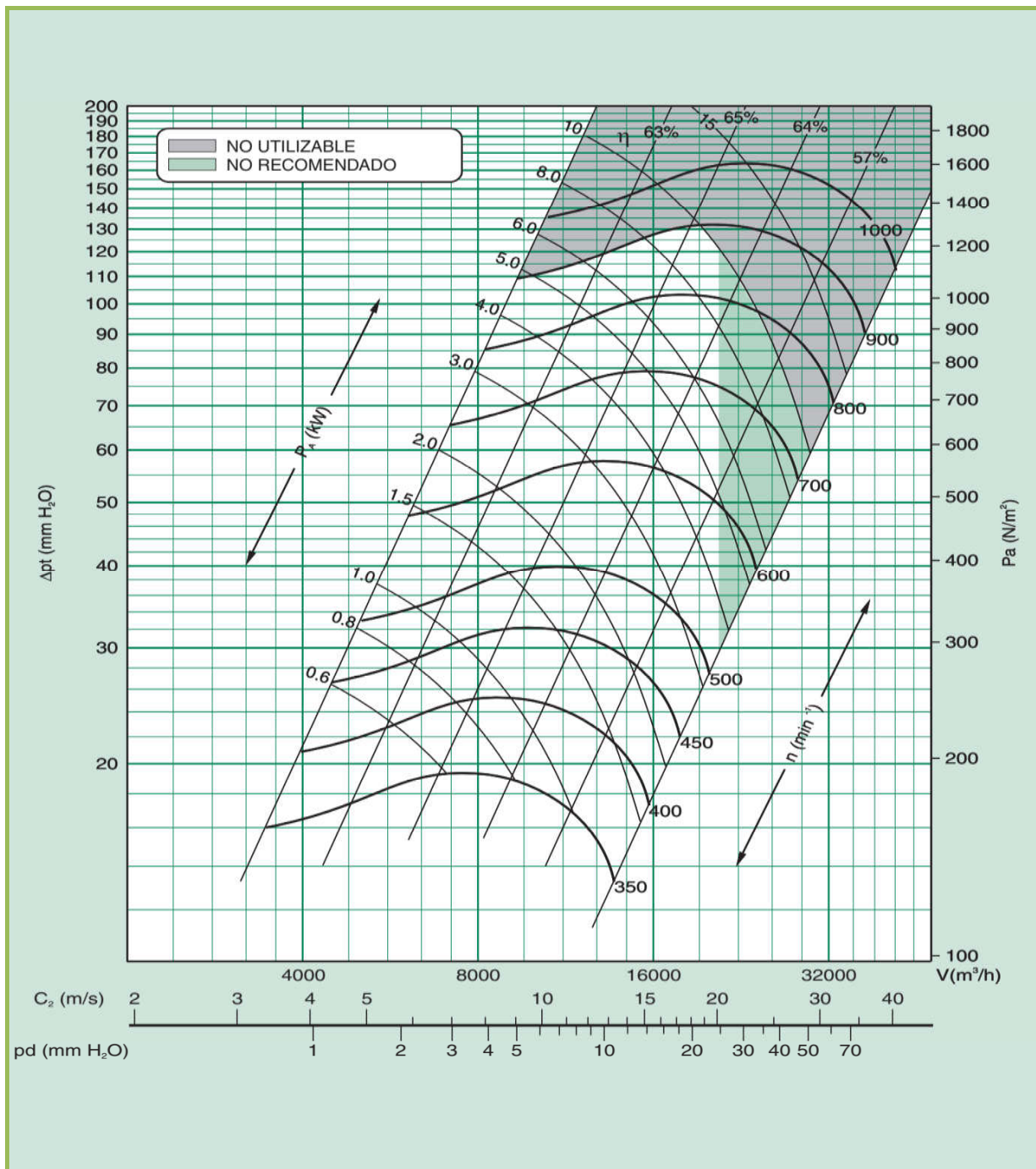
Max. electric power input	Revolutions Max	Moment of inertia	Tip speed	Weight
P max kW	RPM max (min <sup>-1</sup> )	PD <sup>2</sup> /4	u	Kg
		Kg m <sup>2</sup>	m/s	
7	1000	0,840	n (min <sup>-1</sup> ) x 0.0314	75



TSA 25/13



Max. electric power input	Revolutions Max	Moment of inertia	Tip speed	Weight
P max kW	RPM max (min <sup>-1</sup> )	PD <sup>2</sup> / 4	u	Kg
		Kg m <sup>2</sup>	m/s	
10	900	1,309	n (min <sup>-1</sup> ) x 0.0351	89



TSA 30/14



Max. electric power input	Revolutions Max	Moment of inertia	Tip speed	Weight
P max kW	RPM max (min <sup>-1</sup> )	PD <sup>2</sup> / 4	u	Kg
		Kg m <sup>2</sup>	m/s	
11	750	2,581	n (min <sup>-1</sup> ) x 0.0419	120

