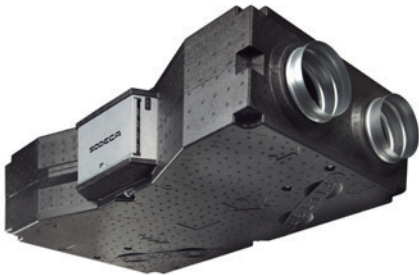


VENUS



High-efficiency single-zone heat recovery ventilators for residential installations.



EC Version Control

High performance heat recovery ventilators to be installed inside residential buildings. With a low power consumption and heat recovery efficiency of up to 93%. For technical ceiling installation.

Finish:

- Light expanded polypropylene body for low noise emission levels.
- Low-profile for fitting in false ceiling.
- 160 mm inlets/outlets (models 150 and 300) and 250 mm inlets/outlets (models 500 and 700).

Characteristics of all versions:

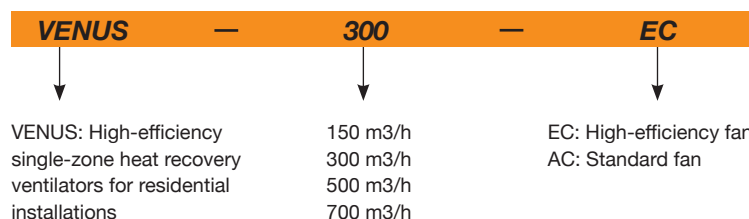
- Counterflow heat exchanger.
- Can adjust flow via external control signal.
- Condensate drainage with built-in siphon.
- Access to filters and condensate drainage from above and below.

Additional Characteristics of the EC version:

- Operation compatible 50/60 Hz.
- Air supply filters with F7 efficiency level.
- High-efficiency EC fans.
- Digital remote control panel included.
- Frost protection and free cooling.
- Multizone control by optionally connecting CO₂, PIR (presence) and RH (relative humidity) sensors. ALL/NOTHING signal type.

Version	AC	EC
Motor type	AC	EC (high efficiency)
Control panel	Manual selector CP-SM-V-4 (accessory not included)	Digital (included)
Control panel cable	4-wire, 230V (not included)	4-wire PTPM-RJ12 10m Included/Maximum 30m
No. of fan speeds	3	3
Supply/Extraction filter efficiency	F5/G4	F7/G4
Alarm management	YES	YES
Flow control via external control	YES	YES
Each fan adjusted precisely	-	YES
Control of closing hatches	-	YES (hatches not supplied)
Connections to 5 optional sensors	-	Types: CO ₂ /PIR/HR
Sensor power supply	-	15V DC
External control to force maximum flow	-	YES
Free cooling by stopping 1 fan	-	YES (with timer setting)
Frost protection	-	YES
Adjustable filter change alarm	-	YES
LED filter state control	YES	YES

Order code



Technical characteristics

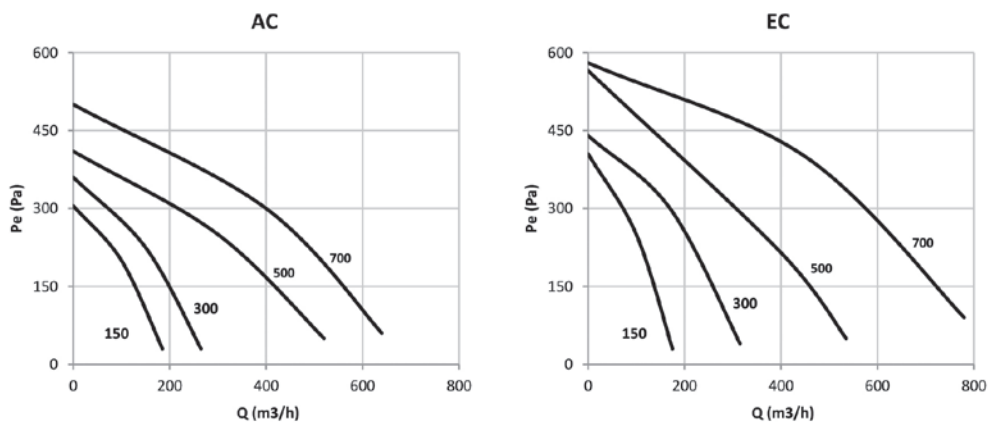
Modelo	Maximum airflow (m ³ /h)	Total Power (W)	Heat recovery efficiency (%)	Maximum admissible current 220-240V (A)	Irradiated sound level at 3m dB(A)	Weight (Kg)	According ErP
VENUS-150-AC	185	105	93	2 x 0,23	37,3	17,4	2018
VENUS-150-EC	175	65	93	2 x 0,14	37,7	17,2	2018
VENUS-300-AC	265	145	93	2 x 0,32	38,9	19,5	2018
VENUS-300-EC	315	170	93	2 x 0,37	43,5	19,3	2018
VENUS-500-AC	515	230	93	2 x 0,50	47,1	35	2018
VENUS-500-EC	535	220	93	2 x 0,48	45,8	35,5	2018
VENUS-700-AC	650	270	93	2 x 0,59	42,9	40	2018
VENUS-700-EC	785	430	93	2 x 0,93	53,6	40,7	2018



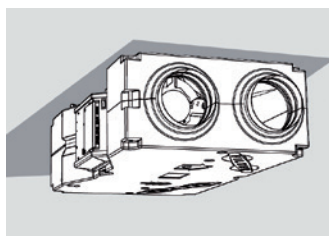
Erp. (Energy Related Products)

Information on Directive 2009/125/EC can be downloaded from the SODECA website or the QuickFan selector programme.

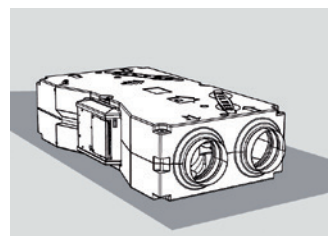
Characteristic Curves



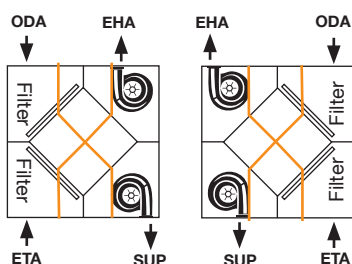
Installation



In a false ceiling



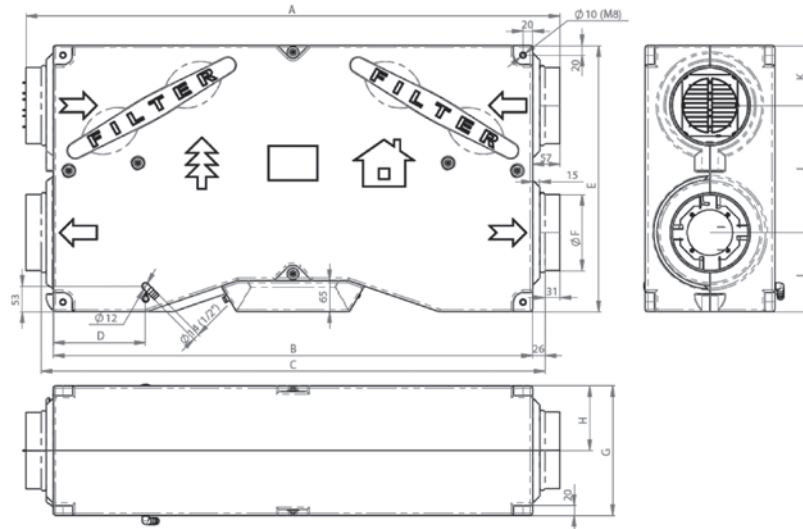
Floor-mounted



Configuration may be chosen by turning the machine through 180°. Access to filters and drainage from above and below.

ODA: Fresh air from outside/**SUP:** Air blown into the premises
EHA: Stale air outlet/**ETA:** Air extracted from the premises

Dimensions in mm



Model	A	B	C	D	E	F	G	H	I	J	K
VENUS 150 / 300	1114	1000	1051	193	555	159	270	135	165	265	125
VENUS 500 / 700	1505	1391	1441	248	846	249	360	180	235	420	190

Accessories

